











# Ostomy Supplies Catalogue

2018-10-23

## Category Table of Contents

Category..... Page	
<b>Belts/Seals/Protectants/Rings</b> 	Belts /Seals/Skin Protectants/ Rings..... 3
<b>Coloplast—Pouches</b> 	Coloplast - Pouches ..... 16
<b>Coloplast—Wafers/Barriers</b> 	Coloplast - Wafers/Barriers .... 27
<b>ConvaTec—Pouches</b> 	ConvaTec - Pouches ..... 34
<b>ConvaTec—Wafers/Barriers</b> 	ConvaTec - Wafers/Barriers ... 40
<b>Hollister—Pouches</b> 	Hollister - Pouches ..... 44
<b>Hollister—Wafers/Barriers</b> 	Hollister - Wafers/Barriers ..... 52
<b>Wound Drainage Managers</b> 	Wound Drainage Managers .... 55

**No Sting Barrier Film Wipes****Manufacturer:** 3M **Manufacturer Code:** 3344

**Features:** A fast-drying, non-sticky, alcohol-free liquid barrier film that forms a breathable, transparent coating on the skin. Protects damaged or intact skin from body fluids, adhesive trauma, friction, and incontinence. The film is hypoallergenic, non-cytotoxic and will not sting even when applied to damaged or denuded skin.

**Usage:** A hypoallergenic, non-cytotoxic liquid film which will not sting even when applied to damaged or denuded skin.

**Precautions:** If Cavilon No Sting Barrier Film is applied to an area with skin folds or other skin-to-skin contact, ensure that these areas of skin are separated to allow coating to dry thoroughly before allowing skin to return to normal position.

**Size:** 1mL**Series:****Standard Box Quantity:** 30**No Sting Barrier Film Spray 28ml bottle****Manufacturer:** 3M **Manufacturer Code:** 3346

**Features:** A sting-free, alcohol-free liquid barrier film that dries quickly to form a breathable, transparent coating on the skin. Designed to protect intact or damaged skin from urine, faeces, other body fluids, tape trauma, and friction. Forms a uniform film when applied to the skin. Dispersed in a unique non-cytotoxic, non-stinging solvent, which dries rapidly.

**Usage:** It is intended as a primary barrier against irritation from body fluids.

**Precautions:** Not to be used as dressing protection from bacterial contamination or on infected areas of the skin. Flammable in liquid form. Use in well ventilated area. Avoid using around flames and sources of ignition. Keep out of the reach of children.

**Size:** 28ml bottle**Series:****Standard Box Quantity:** 1**Active Lifestyle Sure Seal Rings, Small 10/pk****Manufacturer:** Active Lifestyles **Manufacturer Code:** RS01-10

**Features:** Completely Waterproof. Keeps Leaks Trapped. See through Material Matches any Skin Tone. Skin-Friendly and Hypo-Allergenic Barrier

**Usage:** Sure Seal Rings are used to reinforce the seal of the skin barrier to the skin around the stoma.

**Precautions:** Hypo-Allergenic.

**Size:** Small fits flanges 32mm (1 1/4") - 50mm (2")**Series:****Standard Box Quantity:** 10

## ALRS0210

## Belts /Seals/Skin Protectants/Rings

### Active Lifestyle Sure Seal Rings, Large 10/pk

**Manufacturer:** Active Lifestyles **Manufacturer Code:** RS02-10

**Features:** Completely Waterproof. Keeps Leaks Trapped. See through Material Matches any Skin Tone. Skin-Friendly and Hypo-Allergenic Barrier

**Usage:** Sure Seal Rings are used to reinforce the seal of the skin barrier to the skin around the stoma.

**Precautions:** Hypo-Allergenic.

**Size:** Medium fits 45mm (1 3/4") Floating Flange & 51mm (2") - 72mm (2 3/4")

**Series:**

**Standard Box Quantity:** 10



## COL0421

## Belts /Seals/Skin Protectants/Rings

### Ostomy Belt (regular up to 40")

**Manufacturer:** Coloplast **Manufacturer Code:** 421

**Features:** The Brava Belt is made of soft and comfortable material, and is discreet to wear. It ensures the position of the baseplate for extra security.

**Usage:** The Brava® belt fits with all SenSura® and Assura® baseplates with belt ears.

**Precautions:** Latex free

**Size:** Regular

**Series:**

**Standard Box Quantity:** 1



## COL0422

## Belts /Seals/Skin Protectants/Rings

### Ostomy Belt (X large up to 54")

**Manufacturer:** Coloplast **Manufacturer Code:** 422

**Features:** The Brava Belt is made of soft and comfortable material, and is discreet to wear. It ensures the position of the baseplate for extra security.

**Usage:** The Brava® belt fits with all SenSura® and Assura® baseplates with belt ears.

**Precautions:** Latex free

**Size:** XL

**Series:**

**Standard Box Quantity:** 1



## COL12050

## Belts /Seals/Skin Protectants/Rings

**Brava Alcohol Free Paste 60g****Manufacturer:** Coloplast **Manufacturer Code:** 12050**Features:** Alcohol Free Ostomy Paste**Usage:** Brava Paste is intended to fill in cavities/folds in the intact skin around the stoma. This provides a seal between the stoma and the ostomy baseplate and protects the skin against the stoma output.**Precautions:** Keep away from sunlight. Store products at cool and dry conditions - do not freeze. Allow products to return to room temperature before applying. For external use only.**Size:** 60g**Series:****Standard Box Quantity:** 1

## COL12070

## Belts /Seals/Skin Protectants/Rings

**Brava Barrier Strip - Lunar****Manufacturer:** Coloplast **Manufacturer Code:** 12070**Features:** Brava Elastic Tape is intended to support the rim of the base plate by providing additional adhesion to the intact skin.**Usage:** Place the tape where desired. Remember that a part of the adhesive should be covered by the tape. Remove the remaining protective paper sheet and smooth the tape onto the skin. You can place the Elastic Tape wherever you feel you need to support the adhesive.**Precautions:** Not recommended for children weighing less than 7kg. Store products horizontally in cool, dry conditions. Products must not be stored under freezing conditions. Allow products to return to room temperature before applying.**Size:** 1/2 moon**Series:****Standard Box Quantity:** 20

## COL1907

## Belts /Seals/Skin Protectants/Rings

**Brava Powder****Manufacturer:** Coloplast **Manufacturer Code:** 1907**Features:** Brava Powder reduces skin irritation related to moist skin. It absorbs moisture so the skin is kept dry.**Usage:** It can be used just around the stoma or under the baseplate.**Precautions:****Size:** 25g**Series:****Standard Box Quantity:** 1

## COL2041

## Belts /Seals/Skin Protectants/Rings

### Coloplast Prep Wipe

**Manufacturer:** Coloplast **Manufacturer Code:** 2041

**Features:** Clear film forms a breathable barrier, protecting against skin irritants such as adhesives, urine and faeces.

**Usage:** Used for cleansing and protecting the skin. Single application wipes.

**Precautions:** Not to be used with Extra Extended Wear Skin Barriers.

**Size:**

**Series:**

**Standard Box Quantity:** 54



## COL2655

## Belts /Seals/Skin Protectants/Rings

### Coloplast, Strip Paste

**Manufacturer:** Coloplast **Manufacturer Code:** 2655

**Features:** Coloplast Ostomy Paste is a reliable, high quality ostomy paste without alcohol. The paste provides a secure seal yet remains soft and flexible in use.

**Usage:** Shape the strip around the hole in your flange prior to applying it to the skin. Run tube under hot water to soften it prior to application. Used to fill in uneven skin surfaces, create flat pouching surfaces and protect peristomal skin.

**Precautions:** Keep in package until ready to use to avoid drying of product. Alcohol-free.

**Size:** 57gm

**Series:**

**Standard Box Quantity:** 80



## COL3210

## Belts /Seals/Skin Protectants/Rings

### Coloplast, Skin Barrier, 10x10cm

**Manufacturer:** Coloplast **Manufacturer Code:** 3210

**Features:** Skin Barrier Protective Sheets are secure and flexible for total skin protection around stomas, draining wounds and other areas subject to irritation.

**Usage:** Medicated to heal and protect broken down skin due to stool or urine.

**Precautions:** Non pectin based. Latex Free.

**Size:** 10x10cm

**Series:**

**Standard Box Quantity:** 5



COL9500

Belts /Seals/Skin Protectants/Rings

**Coloplast pouch clamp - for non-Easyclose Drainable Pouch**

**Manufacturer:** Coloplast **Manufacturer Code:** 9500

**Features:** Simple pouch closure clamp.

**Usage:** Clamps are included when ordering pouches by the full box, however they must be ordered separately when ordering individual pouches.

**Precautions:** Latex Free.

**Size:**

**Series:**

**Standard Box Quantity:** 20



CON175507

Belts /Seals/Skin Protectants/Rings

**Ostomy Appliance Belt, Approx Size 107cm (42")**

**Manufacturer:** Convatec **Manufacturer Code:** 175507

**Features:** Adjustable appliance belt, adjusts up to 42 inches.

**Usage:** Attaches to belt loops on SUR-FIT Natura Pouches and SUR-FIT Autolock pouches. Provides added sense of security.

**Precautions:** Does not contain latex.

**Size:** Universal

**Series:**

**Standard Box Quantity:** 1



CON175635

Belts /Seals/Skin Protectants/Rings

**Convatec tail closure - for drainable pouches**

**Manufacturer:** ConvaTec **Manufacturer Code:** 175635

**Features:** Designed with a soft comfortable feel. The velvety texture and feel is designed to provide greater flexibility. For improved security a clicking noise can be heard when closing the Tail Closure.

**Usage:** Designed for use with SUR-FIT Natura, Autolock and Active Life drainable pouches.

**Precautions:** Prior to initial use, open and close the closure a few times. Latex Free.

**Size:**

**Series:**

**Standard Box Quantity:** 10



**Stomahesive Paste 2oz Tube****Manufacturer:** Convatec **Manufacturer Code:** 183910**Features:** Stomahesive Paste® is composed of ingredients similar to those of Stomahesive powder. The paste is a highly effective filler, sealant and protective skin barrier for use around colostomy, ileostomy and urinary stomas.**Usage:** Also used to protect exposed skin around fistula sites, between the base of the stoma and the opening in the appliance and as a filler for skin folds, uneven skin surfaces and scars.**Precautions:****Size:** 56.7g**Series:****Standard Box Quantity:** 1**Convatec Stomahesive Powder, 28.3g****Manufacturer:** ConvaTec **Manufacturer Code:** 25510**Features:** Skin Preparation and protective powder.**Usage:** Helps form a protective barrier for excoriated or weeping skin. Used in wound and ostomy care.**Precautions:** Does not contain latex.**Size:** 28.3 gm**Series:****Standard Box Quantity:** 1**Convatec AllKare Adhesive Remover Wipe****Manufacturer:** ConvaTec **Manufacturer Code:** 37443**Features:** Wipes contain an emollient-rich formula of Iso-alcohol-free solution that is non-irritating and non-stinging.**Usage:** Wipes remove the film left from tape, wafer and skin adhesive that can reduce wearing time.**Precautions:** AllKare wipes do not adversely affect Stomahesive or Durahesive skin barrier adhesion or wear time.**Size:****Series:****Standard Box Quantity:** 100

**Convatec AllKare Protective Wipe****Manufacturer:** ConvaTec **Manufacturer Code:** 37444**Features:** Wipe is a non-water soluble protective barrier which resists breakdown and "breathes" for greater comfort.**Usage:** Wipes leave a thin, comfortable film, which protects against skin stripping, tension blisters, folliculitis, maceration and adhesive residue.**Precautions:** AllKare wipes do not adversely affect Stomahesive or Durahesive skin barrier adhesion or wear time.**Size:****Series:****Standard Box Quantity:** 100**Convatec Eakin Cohesive Seal, Large, 10cm****Manufacturer:** ConvaTec **Manufacturer Code:** 839001**Features:** Seal, Skin Barrier Ring, large, round. Used externally wherever the skin is damaged, excoriated or vulnerable and needs protection against body wastes and fluids.**Usage:** Eakin Cohesive Seals or Skin Barriers can be moulded to a variety of shapes to help prevent leakage around the stoma by acting as filler for uneven skin surfaces.**Precautions:** Latex Free.**Size:** Large, 10cm**Series:****Standard Box Quantity:** 10**Convatec Eakin Cohesive Seal, Small, 5cm****Manufacturer:** ConvaTec **Manufacturer Code:** 839002**Features:** Seal, Skin Barrier Ring, Small, round. Used externally wherever the skin is damaged, excoriated or vulnerable and needs protection against body wastes and fluids.**Usage:** Eakin Cohesive Seals or Skin Barriers can be moulded to a variety of shapes to help prevent leakage around the stoma by acting as filler for uneven skin surfaces.**Precautions:** Latex Free.**Size:** Small, 5cm**Series:****Standard Box Quantity:** 20

## HOL7299

## Belts /Seals/Skin Protectants/Rings

### Hollister, Ostomy Belt, Large Fits 34-65" circumference

**Manufacturer:** Hollister **Manufacturer Code:** 7299

**Features:** Attaches securely to an ostomy pouch to hold the pouch firmly in place. Belt attaches easily to the pouch belt adapter. High quality elastic material is washable; wide belt is soft and comfortable and prevents rolling. Each belt is continuously adjustable and fits all sizes.

**Usage:** This elastic belt may be used with pouches that have belt tabs.

**Precautions:** Latex Free.

**Size:** Large (74-124cm)

**Standard Box Quantity:** 1

**Series:**



## HOL7300

## Belts /Seals/Skin Protectants/Rings

### Hollister, Ostomy Belt, Medium Fits 23-43" circumference

**Manufacturer:** Hollister **Manufacturer Code:** 7300

**Features:** Attaches securely to an ostomy pouch to hold the pouch firmly in place. Belt attaches easily to the pouch belt adapter. High quality elastic material is washable; wide belt is soft and comfortable and prevents rolling. Each belt is continuously adjustable and fits all sizes.

**Usage:** This elastic belt may be used with pouches that have belt tabs.

**Precautions:** Latex Free.

**Size:** Medium (66-109cm)

**Standard Box Quantity:** 1

**Series:**



## HOL7331

## Belts /Seals/Skin Protectants/Rings

### Hollister Drain Tube Adapter

**Manufacturer:** Hollister **Manufacturer Code:** 7331

**Features:** Convenient and easy to attach to urostomy pouch. Safe to use.

**Usage:** Allows easy attachment of a night drainage collector to the pouch. For use with Series 14xx, 390x, 1840x, and 1841x Urostomy Pouches.

**Precautions:** Latex free.

**Size:**

**Standard Box Quantity:** 10

**Series:**



## HOL7730

## Belts /Seals/Skin Protectants/Rings

### Medical Adhesive

**Manufacturer:** Hollister **Manufacturer Code:** 7730US

**Features:** Medical grade silicone adhesive is unaffected by moisture. Remains flexible and comfortable; provides a secure and reliable seal. Easy to use; spray allows application directly to appliance prior to application to skin.

**Usage:** Can be used on sensitive skin; Allows skin to breathe. Recommended for post operative use, home use, allows bathing/swimming.

**Precautions:**

**Size:** 90g

**Series:**

**Standard Box Quantity:** 1



## HOL7760

## Belts /Seals/Skin Protectants/Rings

### No-Sting Remover Wipes 50/Box

**Manufacturer:** Hollister **Manufacturer Code:** 7760

**Features:** Gentle solvent removes adhesives and cements; makes appliance removal fast and easy. Effective for removal of most adhesives and safe to use on adult skin. Easy to use in a convenient wipe package.

**Usage:** Product has features that would be most appropriate for post-operative care.

**Precautions:** Recommended for Home Use.

**Size:**

**Series:**

**Standard Box Quantity:** 50



## HOL7806

## Belts /Seals/Skin Protectants/Rings

### Moldable Barrier Ring (4" Round) 10/Box

**Manufacturer:** Hollister **Manufacturer Code:** 7806

**Features:** Sting-free alternative to paste. Can be stretched, molded, cut, bent, and stacked together to improve the fit of the skin barrier. For individuals with sensitive skin or limited dexterity. Prolongs skin barrier wear time when used under a pouch or 2-piece skin barrier.

**Usage:** The shape is ideal for someone with a stoma that protrudes from the abdomen. The skin barrier is supplied with an opening that allows the user to apply it without any preparation.

**Precautions:** Appropriate for post-operative and home care. Product can be worn while bathing or swimming.

**Size:** Large 102mm

**Series:**

**Standard Box Quantity:** 10



## HOL79300

## Belts /Seals/Skin Protectants/Rings

### Adapt Paste (60g Tube)

**Manufacturer:** Hollister **Manufacturer Code:** 79300

**Features:** The paste tube can be emptied down to the last drop. Low-alcohol paste helps to minimize stinging.

**Usage:** Used to caulk and fill skin crevices to improve the fit of a skin barrier.

**Precautions:** Adapt paste prevents liquid drainage from getting between skin and skin barrier. This protects skin and often extends the life of skin barrier. Adapt paste is NOT an adhesive and too much paste may actually interfere with a good seal.

**Size:** 57g

**Series:**

**Standard Box Quantity:** 1



## HOL79520

## Belts /Seals/Skin Protectants/Rings

### Adapt Convex Barrier Rings - Hollister 20mm (13/16")

**Manufacturer:** Hollister **Manufacturer Code:** 79520

**Features:** Can be cut, bent, and stacked together to improve the fit of the skin barrier. Used to adjust skin barrier thickness for deeper convexity. Used to create a custom fit, including oval-shaped convexity.

**Usage:** Our most durable skin barrier; helps prevent erosion. Because Adapt Convex Barrier Rings are convex, they provide added form to the skin barrier and help support the peristomal skin. These products are ideal for someone whose stoma does NOT protrude from the abdomen.

**Precautions:** Do not use on patients whose stoma protrudes from the abdomen.

**Size:** 20mm

**Series:**

**Standard Box Quantity:** 10



## HOL79530

## Belts /Seals/Skin Protectants/Rings

### Adapt Convex Barrier Rings - Hollister 30mm (1-3/16")

**Manufacturer:** Hollister **Manufacturer Code:** 79530

**Features:** Can be cut, bent, and stacked together to improve the fit of the skin barrier. Used to adjust skin barrier thickness for deeper convexity. Used to create a custom fit, including oval-shaped convexity.

**Usage:** Our most durable skin barrier; helps prevent erosion. Because Adapt Convex Barrier Rings are convex, they provide added form to the skin barrier and help support the peristomal skin. These products are ideal for someone whose stoma does NOT protrude from the abdomen.

**Precautions:** Do not use on patients whose stoma protrudes from the abdomen.

**Size:** 30mm

**Series:**

**Standard Box Quantity:** 10



**Adapt Convex Barrier Rings - Hollister 40mm (1-9/16")****Manufacturer:** Hollister **Manufacturer Code:** 79540**Features:** Can be cut, bent, and stacked together to improve the fit of the skin barrier. Used to adjust skin barrier thickness for deeper convexity. Used to create a custom fit, including oval-shaped convexity.**Usage:** Our most durable skin barrier; helps prevent erosion. Because Adapt Convex Barrier Rings are convex, they provide added form to the skin barrier and help support the peristomal skin. These products are ideal for someone whose stoma does NOT protrude from the abdomen.**Precautions:** Do not use on patients whose stoma protrudes from the abdomen.**Size:** 40mm**Series:****Standard Box Quantity:** 10**Hollister Adapt Oval Convex Barrier Ring 30mm X 48mm****Manufacturer:** Hollister **Manufacturer Code:** 79602**Features:** Can be cut, bent, and stacked together to improve the fit of the skin barrier. Used to adjust skin barrier thickness for deeper convexity. Used to create a custom fit, including oval-shaped convexity.**Usage:** Our most durable skin barrier; helps prevent erosion. Because Adapt Convex Barrier Rings are convex, they provide added form to the skin barrier and help support the peristomal skin. These products are ideal for someone whose stoma does NOT protrude from the abdomen.**Precautions:** Do not use on patients whose stoma protrudes from the abdomen.**Size:** 30mm X 48mm, oval**Series:****Standard Box Quantity:** 10**Hollister pouch clamp - for drainable and mini pouches****Manufacturer:** Hollister **Manufacturer Code:** 8770**Features:** Precision moulded plastic pouch clamp locks securely and is easy to use.**Usage:** Clamp is curved and fits the body contours. Use with Hollister drainable pouches.**Precautions:** Latex Free.**Size:****Series:****Standard Box Quantity:** 20

## HOL9343

## Belts /Seals/Skin Protectants/Rings

### Hollister, Leg Strap, Medium

**Manufacturer:** Hollister **Manufacturer Code:** 9343

**Features:** Wide, lightweight, woven fabric allows skin to breathe and resists rolling or binding. Smooth plastic connectors. Machine washable.

**Usage:** The Hollister fabric leg bag strap is wide to help hold the bag comfortably in place.

**Precautions:** Latex Free.

**Size:** Medium

**Series:**

**Standard Box Quantity:** 10



## HOL9346

## Belts /Seals/Skin Protectants/Rings

### Urostomy Connecting Tubing

**Manufacturer:** Hollister **Manufacturer Code:** 9346

**Features:** Latex-free, kink-resistant extension tubing with connector.

**Usage:** For use with urinary catheters and drainage bags.

**Precautions:** Sterile

**Size:** 46cm

**Series:**

**Standard Box Quantity:** 1



## HOL9781

## Belts /Seals/Skin Protectants/Rings

### Hollister, Horizontal Drain/Tube Attachment

**Manufacturer:** Hollister **Manufacturer Code:** 9781

**Features:** Sterile, flexible support secured to a synthetic skin barrier with FlexWear backing. The device may stay in place up to 10 days.

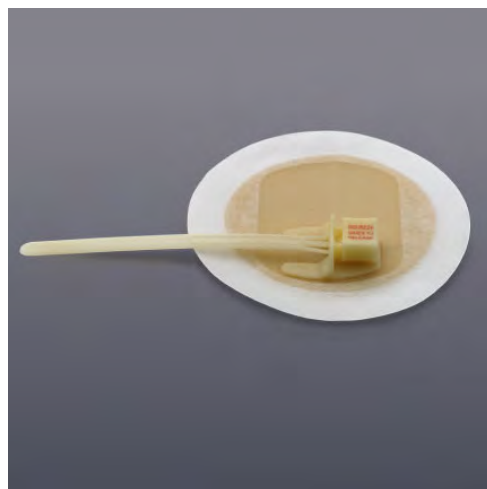
**Usage:** Used to secure, stabilize and support a variety of catheters, drains and tubes. Eliminates the need for taping or suturing tubes to skin. Protects the surrounding skin and minimizes tube movement.

**Precautions:** Sterile, Latex Free.

**Size:** Fits 5-40 FR

**Series:**

**Standard Box Quantity:** 1



**Hydrofera Blue Adhesive Ring Dressing 6cm diameter****Manufacturer:** Hollister **Manufacturer Code:** BRF2650

**Features:** Provides an antibacterial cover that inhibits the growth of microorganisms. Effective against MRSA, VRE and Candida. Binds endotoxins and absorbs bacteria-laden exudate away from the wound which facilitates healing and aids in patient comfort. Similar absorbency to other absorptive dressings.

**Usage:** Can be used under ostomy skin barriers. Broad spectrum activity against a variety of bacteria and yeast commonly found in wounds.

**Precautions:** Compatible for use with enzymatic debridement agents and growth factors. Not indicated for third-degree burns.

**Size:** 6.3cm diam**Series:****Standard Box Quantity:** 10**Skin Prep Wipe****Manufacturer:** Medline **Manufacturer Code:** MSC1500

**Features:** Sureprep is a fast drying skin protectant that forms a protective film to help reduce friction during removal of tapes and films. Vapor permeable and delivers protection from friction and incontinence.

**Usage:** The transparent barrier may be used on periwound, peristomal or areas that come in contact with bodily fluids. Frequency of application should be at each dressing change or 24-72 hours depending on frequency of incontinence.

**Precautions:** Contains alcohol. Do not apply directly to open wounds or infected skin. Should redness or other signs of irritation appear, discontinue use.

**Size:****Series:****Standard Box Quantity:** 50**Moldable Barrier Ring 4.2mm Thick ( 2" Round)****Manufacturer:** Coloplast **Manufacturer Code:** 12042

**Features:** The Brava® Mouldable Ring creates a durable seal between the stoma and the baseplate to reduce leakage. It is easy to use and can be moulded to fit your body shape.

**Usage:** It is designed to be the most durable ring, allowing it to maintain a tighter fit. It is easy to use and can be moulded to fit your body shape. This ensures a durable, tight fit between your stoma and the baseplate.

**Precautions:****Size:** 4.2mm thick**Series:****Standard Box Quantity:** 10

## COL10481

## Coloplast - Pouches

### Mio Flat Drainable Pouch, 1pc CTF, 10 - 55mm, transparent

**Manufacturer:** Coloplast **Manufacturer Code:** 10481

**Features:** Sensura Mio 1-piece drainable has a flat baseplate permanently fixed to the pouch. Provides a tight, secure fit to individual body shapes with optimal discretion. Elastic adhesive, neutral grey textile and full-circle filter.

**Usage:** 1 piece, cut to fit, wide outlet, inspection window. Flat baseplate.

**Precautions:** Latex free.

**Size:** Fits stomas 10-55mm

**Series:** 1pc

**Standard Box Quantity:** 10



## COL10586

## Coloplast - Pouches

### Mio Flat Urostomy Pouch, 1pc CTF, 10 - 45mm, transparent

**Manufacturer:** Coloplast **Manufacturer Code:** 10586

**Features:** SenSura Mio 1-piece urostomy has a flat baseplate permanently fixed to the pouch. Provides a tight, secure fit to individual body shapes with optimal discretion. Elastic adhesive for a secure fit to individual body shapes, neutral grey textile for optimal discretion.

**Usage:** Cut to fit. Flat baseplate.

**Precautions:** Latex free.

**Size:** Fits stomas 10-45mm

**Series:** 1pc

**Standard Box Quantity:** 10



## COL11125

## Coloplast - Pouches

### Sensura Click Opaque Drainable Pouch With Filter 50mm (Red) 10/Box

**Manufacturer:** Coloplast **Manufacturer Code:** 11125

**Features:** Maxi Opaque pouch with filter.

**Usage:** Large opaque, drainable pouch with Easi-Close wide outlet.

**Precautions:** Latex Free.

**Size:** 50mm flange

**Series:** Red

**Standard Box Quantity:** 10



## COL11126

## Coloplast - Pouches

### Sensura Click Opaque Drainable Pouch With Filter 60mm (Blue) 10/Box

**Manufacturer:** Coloplast **Manufacturer Code:** 11126

**Features:** Maxi Opaque pouch with filter.

**Usage:** Large opaque, drainable pouch with Easi-Close wide outlet.

**Precautions:** Latex Free.

**Size:** 60mm flange

**Series:** Blue

**Standard Box Quantity:** 10



## COL11462

## Coloplast - Pouches

### Mio Drainable Pouch with filter, 40mm flange, opaque with window

**Manufacturer:** Coloplast **Manufacturer Code:** 11462

**Features:** SenSura Mio Click drainable pouch with filter and inspection window. Coupling gives an audible "click" when the pouch is securely locked to the baseplate.

**Usage:** Drainable pouch with wide outlet and inspection window. Use with Sensura Mio Click baseplate.

**Precautions:** Latex free.

**Size:** 40mm flange

**Series:** Green

**Standard Box Quantity:** 10



## COL11472

## Coloplast - Pouches

### Mio Drainable Pouch with filter, 50mm flange, opaque with window

**Manufacturer:** Coloplast **Manufacturer Code:** 11472

**Features:** SenSura Mio Click drainable pouch with filter and inspection window. Coupling gives an audible "click" when the pouch is securely locked to the baseplate.

**Usage:** Drainable pouch with wide outlet and inspection window. Use with Sensura Mio Click baseplate.

**Precautions:** Latex free.

**Size:** 50mm flange

**Series:** Red

**Standard Box Quantity:** 10



## COL11473

## Coloplast - Pouches

### Mio Drainable Pouch with filter, 50mm flange, transparent

**Manufacturer:** Coloplast **Manufacturer Code:** 11473

**Features:** SenSura Mio Click drainable pouch with filter. Coupling gives an audible "click" when the pouch is securely locked to the baseplate.

**Usage:** Drainable pouch with wide outlet. Use with Sensura Mio Click baseplate.

**Precautions:** Latex free.

**Size:** 50mm flange

**Series:** Red

**Standard Box Quantity:** 10



## COL11482

## Coloplast - Pouches

### Mio Drainable Pouch with filter, 60mm flange, opaque with window

**Manufacturer:** Coloplast **Manufacturer Code:** 11482

**Features:** SenSura Mio Click drainable pouch with filter and inspection window. Coupling gives an audible "click" when the pouch is securely locked to the baseplate.

**Usage:** Drainable pouch with wide outlet and inspection window. Use with Sensura Mio Click baseplate.

**Precautions:** Latex free.

**Size:** 60mm flange

**Series:** Blue

**Standard Box Quantity:** 10



## COL11483

## Coloplast - Pouches

### Mio Drainable Pouch with filter, 60mm flange, transparent

**Manufacturer:** Coloplast **Manufacturer Code:** 11483

**Features:** SenSura Mio Click drainable pouch with filter. Coupling gives an audible "click" when the pouch is securely locked to the baseplate.

**Usage:** Drainable pouch with wide outlet. Use with Sensura Mio Click baseplate.

**Precautions:** Latex free.

**Size:** 60mm flange

**Series:** Blue

**Standard Box Quantity:** 10



## COL11486

## Coloplast - Pouches

**Mio Click Drainable Pouch 70mm opaque, Wide-Outlet w/Window****Manufacturer:** Coloplast **Manufacturer Code:** 11486**Features:** SenSura Mio Click drainable pouch with filter and inspection window. Coupling gives an audible "click" when the pouch is securely locked to the baseplate.**Usage:** Drainable pouch with wide outlet and inspection window. Use with Sensura Mio Click baseplate.**Precautions:** Latex free.**Size:** 70mm flange**Series:****Standard Box Quantity:** 10

## COL11487

## Coloplast - Pouches

**Mio Click Drainable Pouch 70mm transparent, Wide-Outlet****Manufacturer:** Coloplast **Manufacturer Code:** 11487**Features:** SenSura Mio Click drainable pouch with filter. Coupling gives an audible "click" when the pouch is securely locked to the baseplate.**Usage:** Transparent drainable pouch with wide outlet. Use with Sensura Mio Click baseplate.**Precautions:** Latex free.**Size:** 70mm flange**Series:****Standard Box Quantity:** 10

## COL11492

## Coloplast - Pouches

**Mio Click 2pc Drainable Urostomy Pouch, 40mm, transparent****Manufacturer:** Coloplast **Manufacturer Code:** 11492**Features:** SenSura Mio Click urostomy pouch. Coupling gives an audible "click" when the pouch is securely locked to the baseplate.**Usage:** Multi-chambers minimize sloshing. Anti-reflux valve prevents urine from washing over the stoma. Soft outlet can be connected to urostomy night bag. Use with Sensura Mio Click baseplate.**Precautions:** Latex free.**Size:** 40mm flange**Series:** Green**Standard Box Quantity:** 10

**Mio Click 2pc Drainable Urostomy Pouch, 50mm, transparent****Manufacturer:** Coloplast **Manufacturer Code:** 11498**Features:** SenSura Mio Click urostomy pouch. Coupling gives an audible "click" when the pouch is securely locked to the baseplate.**Usage:** Multi-chambers minimize sloshing. Anti-reflux valve prevents urine from washing over the stoma. Soft outlet can be connected to urostomy night bag. Use with Sensura Mio Click baseplate.**Precautions:** Latex free.**Size:** 50mm flange**Series:** Red**Standard Box Quantity:** 10**Sensura Flex Drainable Pouch Opaque W/Filter, 50mm (Red) 20/Box****Manufacturer:** Coloplast **Manufacturer Code:** 11515**Features:** SenSura Flex drainable opaque pouch is fixed securely to the baseplate by a strong adhesive coupling system. The adhesive coupling is flexible, allowing freedom of movement and making SenSura Flex comfortable and discreet to wear. The pouch can be removed from the SenSura double-layer baseplate, allowing the pouch to be changed more often than the adhesive baseplate.**Usage:** Drainable pouch is suitable for ileostomy.**Precautions:** Requires Sensura Flex baseplate with adhesive coupling.**Size:** 50mm adhesive coupling**Series:** Red**Standard Box Quantity:** 20**Sensura Flex Drainable Pouch, Opaque W/Filter, 70mm (Yellow) 20/Box****Manufacturer:** Coloplast **Manufacturer Code:** 11518**Features:** SenSura Flex drainable opaque pouch is fixed securely to the baseplate by a strong adhesive coupling system. The adhesive coupling is flexible, allowing freedom of movement and making SenSura Flex comfortable and discreet to wear. The pouch can be removed from the SenSura double-layer baseplate, allowing the pouch to be changed more often than the adhesive baseplate.**Usage:** Drainable pouch is suitable for ileostomy.**Precautions:** Requires Sensura Flex baseplate with adhesive coupling.**Size:** 70mm adhesive coupling**Series:** Yellow**Standard Box Quantity:** 20

**Sensura One Piece Flat Urostomy Pouch 10/Box (Cut Up To 76mm)****Manufacturer:** Coloplast **Manufacturer Code:** 11804

**Features:** SenSura 1-piece urostomy features a double-layer adhesive permanently fixed to a transparent cut-to-fit pouch. The whole system is removed and replaced to change the pouch. Non-return valve reduces risk of urinary infections. Soft outlet can be tucked away when not in use for comfort and discretion. Multichambers spread urine evenly to maintain a flat profile and reduce splashing sounds. Cut to fit.

**Usage:** For urostomies requiring a flat baseplate.

Extended wear time adhesive protects against aggressive output from urostomy.

**Precautions:**

**Size:** Fits stoma size 10-76 mm

**Series:**

**Standard Box Quantity:** 10

**Sensura One Piece Convex Light Urostomy Pouch 10/Box (Cut Up To 43mm)****Manufacturer:** Coloplast **Manufacturer Code:** 11815

**Features:** SenSura 1-piece urostomy features a double-layer adhesive permanently fixed to a transparent cut-to-fit pouch. The whole system is removed and replaced to change the pouch. Non-return valve reduces risk of urinary infections. Soft outlet tucks away for comfort. Multichambers spread urine evenly to maintain discretion. Precut.

**Usage:** Designed to fit a stoma that is flush, retracted, or located in a skin fold. It applies light pressure on the peristomal skin to reduce the risk of leakage by allowing the stoma to protrude. Extended wear time adhesive protects from aggressive output.

**Precautions:**

**Size:** Fits stoma size 60mm

**Series:**

**Standard Box Quantity:** 10

**Sensura Flex , Transparent, Urostomy Pouch, 50mm (Red) 20/Box****Manufacturer:** Coloplast **Manufacturer Code:** 11828

**Features:** SenSura Flex transparent urostomy pouch is fixed securely to the baseplate by a strong adhesive coupling system. The adhesive coupling is flexible, allowing freedom of movement, comfort and discretion. The pouch can be removed from the baseplate, allowing the pouch to be changed. Non-return valve reduces the risk of urinary infections. Soft outlet tucks away for comfort. Multichambers spread urine evenly to maintain discretion. Precut.

**Usage:** Suitable for urostomy.

**Precautions:** Requires Sensura Flex baseplate with adhesive coupling.

**Size:** 50mm adhesive coupling

**Series:** Red

**Standard Box Quantity:** 20



## COL11855

## Coloplast - Pouches

### Sensura Click Transparent Urostomy Pouch 50mm 10/Box (Red)

**Manufacturer:** Coloplast **Manufacturer Code:** 11855

**Features:** Sensura® Click transparent Urostomy Pouch.

**Usage:** Multichamber pouch. New beige water repellent backing and anti-reflux valve. Audible Click locking system can be rotated/repositioned for comfort with tuck away outlet and simple connector for night drainage bag.

**Precautions:** Latex Free.

**Size:** 50mm flange

**Series:** Red

**Standard Box Quantity:** 10



## COL12596

## Coloplast - Pouches

### Assura One Piece Deep Convex Urostomy Pouch 10/Box (Cut Up To 43mm)

**Manufacturer:** Coloplast **Manufacturer Code:** 12596

**Features:** Cut-to-fit convex skin barrier. Urostomy pouch with flexible adhesive soft backing for comfort and colour-proof film.

**Usage:** Anti-reflux valve and simple closure with adaptor for night drainage bag. Includes belt loops.

**Precautions:** Latex Free.

**Size:** 15-43mm stoma

**Series:**

**Standard Box Quantity:** 10



## COL14103

## Coloplast - Pouches

### Assura One Piece Deep Convex Transparent Drainable Pouch With Filter 10/Box (Cut Up To 43mm)

**Manufacturer:** Coloplast **Manufacturer Code:** 14103

**Features:** With Assura 1-piece drainable, the adhesive is permanently fixed to the pouch. To change the pouch, the whole system is removed and replaced. Transparent drainable pouch with hide-away outlet and filter.

**Usage:** For stomas requiring a convex baseplate.

For retracted stomas and deep skin folds and scars, providing extra security through moderate to high pressure on the abdomen.

**Precautions:**

**Size:** Fits stoma size 15-43mm

**Series:**

**Standard Box Quantity:** 10



### Easiflex Two-Piece Skin Drainable Pouch With Filter Teddy Print (30mm-Purple) 10/Box

**Manufacturer:** Coloplast **Manufacturer Code:** 14692

**Features:** The drainable pouch is fixed securely to the baseplate with a strong adhesive coupling system. The adhesive coupling is flexible, allowing freedom of movement, making Easi-flex® comfortable and discreet to wear. The pouch can be removed from the baseplate, allowing the pouch to be changed more often than the adhesive baseplate.

**Usage:** A simple, soft and secure system – for pediatrics from newborns to children up to five years of age.

**Precautions:** Requires Assura pediatric adhesive baseplate.

**Size:** 27mm coupling size

**Series:**

**Standard Box Quantity:** 10



### Sensura One Piece Flat Regular Wear Transparent Drainable Pouch With Filter 10/Box (Cut Up To 76mm)

**Manufacturer:** Coloplast **Manufacturer Code:** 15521

**Features:** SenSura 1-piece drainable features a double-layer adhesive permanently fixed to a transparent cut-to-fit pouch. The whole system is removed and replaced to change the pouch. The outlet is easy to empty and clean, and has a tuck away Velcro closure. An inspection window makes it easier to place the adhesive correctly and allows the stoma to be checked when needed. Filter prevents odour and ballooning.

**Usage:** For stomas requiring a flat baseplate.

**Precautions:**

**Size:** Fits stoma size 10-76mm

**Series:**

**Standard Box Quantity:** 10



### Sensura One Piece Convex Light Regular Wear Transparent Drainable Pouch With Filter 10/Box (Cut Up To 43mm)

**Manufacturer:** Coloplast **Manufacturer Code:** 15606

**Features:** SenSura 1-piece drainable features a double-layer adhesive fixed to a transparent cut-to-fit pouch. The whole system is removed and replaced to change the pouch. Easy to empty and clean, and has a tuck away Velcro closure. An inspection window makes it easier to place the adhesive correctly and allows the stoma to be checked. Filter prevents odour and ballooning.

**Usage:** Fit a stoma that is flush, retracted, or located in a skin fold. Applies light pressure on peristomal skin to reduce the risk of leakage by allowing the stoma to protrude.

**Precautions:**

**Size:** Fits stoma size 15-43mm

**Series:**

**Standard Box Quantity:** 10



## COL16706

## Coloplast - Pouches

### Mio Convex Soft Drainable Pouch, 1pc CTF, 10 - 50mm stoma, Opaque with window

**Manufacturer:** Coloplast **Manufacturer Code:** 16706

**Features:** 1-piece drainable has an adaptive convex baseplate permanently fixed to the pouch. Provides a tight, secure fit to individual body shapes with optimal discretion. Elastic adhesive, neutral grey textile and full-circle filter.

**Usage:** Cut to fit, wide outlet, inspection window. Soft convex for stomas with openings above skin level that need support due to challenges in the area around the stoma.

**Precautions:** Latex free.

**Size:** Fits stomas 10-50mm

**Series:** 1pc

**Standard Box Quantity:** 10



## COL16726

## Coloplast - Pouches

### Mio Convex Light Drainable Pouch, 1pc CTF, 15 - 23mm, Opaque with window

**Manufacturer:** Coloplast **Manufacturer Code:** 16726

**Features:** 1-piece drainable has an adaptive convex baseplate that is permanently fixed to the pouch. Provides stability and flexibility, elastic adhesive for a secure fit to individual body shapes, neutral grey textile for optimal discretion.

**Usage:** Cut to fit, wide outlet, inspection window. Light convex for stomas that need gentle help to protrude, or for slightly deep-seated areas where a light curve is needed to get a good grip.

**Precautions:** Latex free.

**Size:** Fits stomas 15-23mm

**Series:** 1pc

**Standard Box Quantity:** 10



## COL16756

## Coloplast - Pouches

### Mio Convex Deep Drainable Pouch, 1pc CTF, 15 - 33mm stoma, Opaque with window

**Manufacturer:** Coloplast **Manufacturer Code:** 16756

**Features:** 1-piece drainable has an adaptive convex baseplate that is permanently fixed to the pouch. Provides stability and flexibility, elastic adhesive for a secure fit to individual body shapes, neutral grey textile for optimal discretion.

**Usage:** Cut to fit, wide outlet, inspection window. Deep convexity for uneven skin areas, deep-seated areas and stomas that need support or help to protrude.

**Precautions:** Latex free.

**Size:** Fits stomas 15-33mm

**Series:** 1pc

**Standard Box Quantity:** 10



**Mio Convex Light Urostomy Pouch, 1pc CTF, 10 - 43mm, transparent****Manufacturer:** Coloplast **Manufacturer Code:** 16837**Features:** SenSura Mio 1-piece urostomy has an adaptive convex baseplate that is permanently fixed to the pouch. Provides stability and flexibility, elastic adhesive for a secure fit to individual body shapes, neutral grey textile for optimal discretion.**Usage:** Cut to fit. Convex light.**Precautions:** Latex free.**Size:** Fits stomas 10-43mm**Series:** 1pc**Standard Box Quantity:** 10**Mio Convex Deep Urostomy Pouch, 1pc CTF, 10 - 43mm, transparent****Manufacturer:** Coloplast **Manufacturer Code:** 16867**Features:** SenSura Mio 1-piece urostomy has an adaptive convex baseplate that is permanently fixed to the pouch. Provides stability and flexibility, elastic adhesive for a secure fit to individual body shapes, neutral grey textile for optimal discretion.**Usage:** Cut to fit. Deep convexity for uneven skin areas, deep-seated areas and stomas that need support or help to protrude.**Precautions:** Latex free.**Size:** Fits stomas 10-43mm**Series:** 1pc**Standard Box Quantity:** 10**Sensura One Piece Postop Flat Regular Wear Drainable Pouch With Wide Tape 6/Box (Cut Up To 76mm)****Manufacturer:** Coloplast **Manufacturer Code:** 19021**Features:** SenSura® Post-Op combines the unique SenSura® double-layer adhesive with the essentials in postoperative care. Provides easy access to the stoma through a 100mm window, and effective drainage through soft outlet that connects easily to various night bags.**Usage:** For post operative use. Cut to fit.**Precautions:****Size:** Fits stoma size 10-76mm**Series:****Standard Box Quantity:** 6

## COL19051

## Coloplast - Pouches

### Sensura Click High Output Transparent Drainable Pouch 50mm (Red)

#### Box/10

**Manufacturer:** Coloplast **Manufacturer Code:** 19051

**Features:** SenSura Click High Output combines the unique SenSura double-layer adhesive with a removable pouch designed to accommodate the need for extra capacity.

**Usage:** It offers a high volume solution for post-operative use and for people with an ileostomy.

#### Precautions:

**Size:** 50mm coupling

**Series:** Red

**Standard Box Quantity:** 10



## COL19052

## Coloplast - Pouches

### Sensura Click High Output Transparent Drainable Pouch 60mm (Blue) 10/

#### Box

**Manufacturer:** Coloplast **Manufacturer Code:** 19052

**Features:** SenSura Click High Output combines the unique SenSura double-layer adhesive with a removable pouch designed to accommodate the need for extra capacity.

**Usage:** It offers a high volume solution for post-operative use and for people with an ileostomy.

#### Precautions:

**Size:** 60mm coupling

**Series:** Blue

**Standard Box Quantity:** 10



## COL8009

## Coloplast - Pouches

### One Piece Urostomy Pouch 10-35mm 10/Box (Cut Up To 35mm)

**Manufacturer:** Coloplast **Manufacturer Code:** 8009

**Features:** Assura pediatric 1-piece urostomy combines the unique skin-friendly spiral adhesive with a small pediatric-friendly pouch size. To change the pouch, the whole system is removed and replaced. soft plastic outlet is easy to handle, and design of the pouch ensures there is no residual urine left in the pouch after emptying. Non-return valve prevents the urine from washing over the stoma, reducing the risk of urinary infections.

**Usage:** For pediatric use.

#### Precautions:

**Size:**

**Series:**

**Standard Box Quantity:** 10



## COL10021

## Coloplast - Wafer/Barrier ( CTF only)

**Sensura Click Regular Wear Flat Skin Barrier With Flange 50mm (Red) 5/Box (Cut Up To 45mm)****Manufacturer:** Coloplast **Manufacturer Code:** 10021**Features:** Non Convex (flat). Click - flexible skin barrier with double layer adhesive technology for secure, safe, long-lasting wear. Belt loops are available.**Usage:** Double-layer adhesive and audible click-lock security ring, provides security, convenience and simplicity. Once locked the pouch is securely fastened to the skin barrier.**Precautions:** Latex Free.**Size:** 50mm flange, 10-45mm stoma**Series:** Red**Standard Box Quantity:** 5

## COL10025

## Coloplast - Wafer/Barrier ( CTF only)

**Sensura Click Xpro, Flat Skin Barrier With Flange, 50mm (Red) 5/Box (Cut Up To 45mm)****Manufacturer:** Coloplast **Manufacturer Code:** 10025**Features:** SenSura Click flat baseplate combines the unique SenSura double-layer adhesive with an audible 'click' to ensure the pouch is locked securely to the baseplate. Extended wear-time adhesive.**Usage:** For stomas requiring a flat baseplate. Extended wear-time adhesive protects against aggressive output from urostomy or ileostomy.**Precautions:****Size:** 50mm coupling for 10-45mm stoma**Series:** Red**Standard Box Quantity:** 5

## COL10031

## Coloplast - Wafers/Barriers ( CTF only)

**Sensura Click Regular Wear Flat Skin Barrier With Flange 60mm (Blue) 5/Box (Cut Up To 55mm)****Manufacturer:** Coloplast **Manufacturer Code:** 10031**Features:** Non Convex (flat). Click - flexible skin barrier with double layer adhesive technology for secure, safe, long-lasting wear. Belt loops are available.**Usage:** Double-layer adhesive and audible click-lock security ring, provides security, convenience and simplicity. Once locked the pouch is securely fastened to the skin barrier.**Precautions:** Latex Free.**Size:** 60mm flange, 10-55mm stoma**Series:** Blue**Standard Box Quantity:** 5

## COL10035

## Coloplast - Wafer/Barrier ( CTF only)

### Sensura Click Xpro, Flat Skin Barrier With Flange, 60mm (Blue) 5/Box (Cut Up To 55mm)

**Manufacturer:** Coloplast **Manufacturer Code:** 10035

**Features:** SenSura Click flat baseplate combines the unique SenSura double-layer adhesive with an audible 'click' to ensure the pouch is locked securely to the baseplate. Extended wear-time adhesive.

**Usage:** For stomas requiring a flat baseplate. Extended wear-time adhesive protects against aggressive output from urostomy or ileostomy.

**Precautions:**

**Size:** 60mm coupling for 10-55mm stoma

**Series:** Blue

**Standard Box Quantity:** 5



## COL10102

## Coloplast - Wafer/Barrier ( CTF only)

### Sensura Flex Regular Wear Flat Skin Barrier 50mm (Red) 10/Box (Cut Up To 48mm)

**Manufacturer:** Coloplast **Manufacturer Code:** 10102

**Features:** SenSura Flex flat baseplate features an adhesive coupling, providing the benefits of a one-piece – the unique combination of security and flexibility.

**Usage:** For stomas requiring a flat baseplate.

**Precautions:** Use only with Sensura Flex pouches with adhesive coupling.

**Size:** 50mm coupling for 10-48mm stoma

**Series:** Red

**Standard Box Quantity:** 10



## COL10103

## Coloplast - Wafers/Barriers ( CTF only)

### Sensura Flex Regular Wear Flat Skin Barrier 70mm (Yellow) 10/Box (Cut Up To 68mm)

**Manufacturer:** Coloplast **Manufacturer Code:** 10103

**Features:** SenSura Flex flat baseplate features an adhesive coupling, providing the benefits of a one-piece – the unique combination of security and flexibility.

**Usage:** For stomas requiring a flat baseplate.

**Precautions:** Use only with Sensura Flex pouches with adhesive coupling.

**Size:** 70mm coupling for 10-68mm stoma

**Series:** Yellow

**Standard Box Quantity:** 10



## COL10105

## Coloplast - Wafer/Barrier ( CTF only)

**Sensura Flex Xpro Flat Skin Barrier Barrier 50mm (Red) 10/Box (Cut Up To 48mm)****Manufacturer:** Coloplast **Manufacturer Code:** 10105**Features:** SenSura Flex flat baseplate features an adhesive coupling, providing the benefits of a one-piece – the unique combination of security and flexibility. Extended wear time adhesive.**Usage:** For stomas requiring a flat baseplate. Extended wear time adhesive protects against aggressive output from urostomy or ileostomy.**Precautions:** Use only with Sensura Flex pouches with adhesive coupling.**Size:** 50mm coupling for 10-48mm stoma**Series:** Red**Standard Box Quantity:** 10

## COL10106

## Coloplast - Wafer/Barrier ( CTF only)

**Sensura Flex Xpro Flat Skin Barrier 70mm (Yellow) 10/Box (Cut Up To 68mm)****Manufacturer:** Coloplast **Manufacturer Code:** 10106**Features:** SenSura Flex flat baseplate features an adhesive coupling, providing the benefits of a one-piece – the unique combination of security and flexibility. Extended wear time adhesive. Cut to fit.**Usage:** For stomas requiring a flat baseplate. Extended wear time adhesive protects against aggressive output from urostomy or ileostomy.**Precautions:** Use only with Sensura Flex pouches with adhesive coupling.**Size:** 70mm coupling for 10-68mm stoma**Series:** Yellow**Standard Box Quantity:** 10

## COL10502

## Coloplast - Wafers/Barriers ( CTF only)

**Mio Click Flat CTF Baseplate STD 40mm 10-35mm****Manufacturer:** Coloplast **Manufacturer Code:** 10502**Features:** Sensura Mio Click Flat baseplate features an elastic adhesive which provides a tight, secure fit to individual body shapes with optimal discretion. Coupling gives an audible "click" when the pouch is securely locked to the baseplate.**Usage:** Cut to fit. Non-convex. Use with SenSura Mio Click pouches.**Precautions:** Latex free.**Size:** 40mm flange fits stomas 10-35mm**Series:** Green**Standard Box Quantity:** 5

## COL10512

## Coloplast - Wafer/Barrier ( CTF only)

### Mio Click Flat CTF Baseplate STD 50mm 10-45mm

**Manufacturer:** Coloplast **Manufacturer Code:** 10512

**Features:** Sensura Mio Click Flat baseplate features an elastic adhesive which provides a tight, secure fit to individual body shapes with optimal discretion. Coupling gives an audible "click" when the pouch is securely locked to the baseplate.

**Usage:** Cut to fit. Non-convex. Use with SenSura Mio Click pouches.

**Precautions:** Latex free.

**Size:** 50mm flange fits stomas 10-45mm

**Series:** Red

**Standard Box Quantity:** 5



## COL10522

## Coloplast - Wafer/Barrier ( CTF only)

### Mio 2pc Click Barrier CTF 60mm flange 10-55mm

**Manufacturer:** Coloplast **Manufacturer Code:** 10522

**Features:** Sensura Mio Click Flat baseplate features an elastic adhesive which provides a tight, secure fit to individual body shapes with optimal discretion. Coupling gives an audible "click" when the pouch is securely locked to the baseplate.

**Usage:** Cut to fit. Non-convex. Use with SenSura Mio Click pouches.

**Precautions:** Latex free.

**Size:** 60mm flange fits stomas 10-55mm

**Series:** Blue

**Standard Box Quantity:** 5



## COL10531

## Coloplast - Wafers/Barriers ( CTF only)

### Mio 2pc Flat CTF 70mm flange 10 - 65mm

**Manufacturer:** Coloplast **Manufacturer Code:** 10531

**Features:** Sensura Mio Click Flat baseplate features an elastic adhesive which provides a tight, secure fit to individual body shapes with optimal discretion. Coupling gives an audible "click" when the pouch is securely locked to the baseplate.

**Usage:** Cut to fit. Non-convex. Use with SenSura Mio Click pouches.

**Precautions:** Latex free.

**Size:** 70mm flange fits stomas 10-65mm

**Series:** Yellow

**Standard Box Quantity:** 5



## COL11025

## Coloplast - Wafer/Barrier ( CTF only)

### Sensura Click Xpro, Convex Lite Skin Barrier With Flange, 50mm (Red) 5/Box (Cut Up To 33mm)

**Manufacturer:** Coloplast **Manufacturer Code:** 11025

**Features:** SenSura Click convex light baseplate combines SenSura double-layer adhesive with an audible 'click' to ensure the pouch is locked securely to the baseplate. Extended wear time adhesive.

**Usage:** Light convexity baseplate for a stoma that is flush, retracted, or located in a skin fold. Applies light pressure on the peristomal skin to reduce the risk of leakage by allowing the stoma to protrude. Extended wear time adhesive for aggressive output from urostomy or ileostomy.

**Precautions:**

**Size:** 50mm coupling fits 15-33mm stoma

**Series:** Red

**Standard Box Quantity:** 5



## COL11035

## Coloplast - Wafer/Barrier ( CTF only)

### Sensura Click Xpro, Convex Lite Skin Barrier With Flange, 60mm (Blue) 5/Box (Cut Up To 43mm)

**Manufacturer:** Coloplast **Manufacturer Code:** 11035

**Features:** SenSura Click convex light baseplate combines SenSura double-layer adhesive with an audible 'click' to ensure the pouch is locked securely to the baseplate. Extended wear time adhesive.

**Usage:** Light convexity baseplate for a stoma that is flush, retracted, or located in a skin fold. Applies light pressure on the peristomal skin to reduce the risk of leakage by allowing the stoma to protrude. Extended wear time adhesive for aggressive output from urostomy or ileostomy.

**Precautions:**

**Size:** 60mm coupling fits 15-43mm stoma

**Series:** Blue

**Standard Box Quantity:** 5



## COL11306

## Coloplast - Wafers/Barriers ( CTF only)

### Sensura Flex Xpro Convex Light Skin Barrier 50mm (Red) 5/Box (Cut Up To 43mm)

**Manufacturer:** Coloplast **Manufacturer Code:** 11306

**Features:** SenSura Flex Xpro convex light baseplate features an adhesive coupling for security and flexibility. Extended wear time adhesive. Cut to fit.

**Usage:** Light convexity for a stoma that is flush, retracted, or located in a skin fold. It applies light and directed pressure on the peristomal skin to reduce the risk of leakage by allowing the stoma to protrude. Extended wear time adhesive protects against aggressive output from urostomy or ileostomy.

**Precautions:** Use only with Sensura Flex pouches with adhesive coupling.

**Size:** 50mm coupling for 15-43mm stoma

**Series:** Red

**Standard Box Quantity:** 5



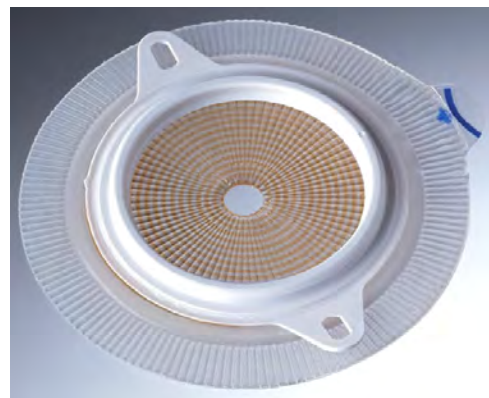
## COL11308

## Coloplast - Wafer/Barrier ( CTF only)

**Sensura Flex Xpro Convex Light Skin Barrier 70mm (Yellow) 5/Box (Cut Up To 56mm)****Manufacturer:** Coloplast **Manufacturer Code:** 11308**Features:** SenSura Flex Xpro convex light baseplate features an adhesive coupling for security and flexibility. Extended wear time adhesive. Cut to fit.**Usage:** Light convexity designed to fit a stoma that is flush, retracted, or located in a skin fold. It applies light and directed pressure on the peristomal skin to reduce the risk of leakage by allowing the stoma to protrude. Extended wear time adhesive protects against aggressive output from urostomy or ileostomy.**Precautions:** Use only with Sensura Flex pouches with adhesive coupling.**Size:** 70mm coupling for 15-56mm stoma**Series:** Yellow**Standard Box Quantity:** 5

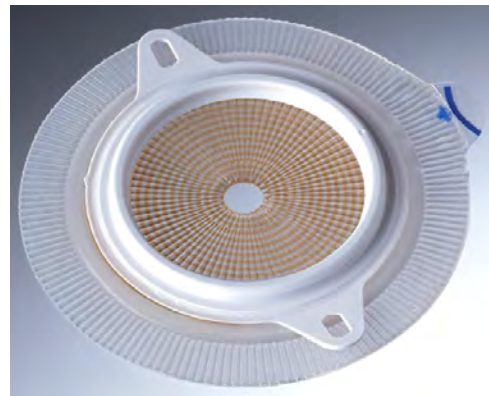
## COL14246

## Coloplast - Wafer/Barrier ( CTF only)

**Assura Click Extended Wear, Deep Convex Skin Barrier With Flange 50mm (Red ) 5/Box (Cut Up To 33mm)****Manufacturer:** Coloplast **Manufacturer Code:** 14246**Features:** Cut-to-fit flanges. Convex (deep convexity). Extended wear time.**Usage:** Barrier comes with a transparent adhesive that provides security and flexibility while preserving the integrity of the surrounding skin. Belt loops on all skin barriers.**Precautions:** Latex Free.**Size:** 50mm flange, 15-33mm stoma**Series:** Red**Standard Box Quantity:** 5

## COL14249

## Coloplast - Wafers/Barriers ( CTF only)

**Assura Click Extended Wear, Deep Convex Skin Barrier With Flange 60mm (Blue) 5/Box (Cut Up To 43mm)****Manufacturer:** Coloplast **Manufacturer Code:** 14249**Features:** Cut-to-fit flanges. Convex (deep convexity). Extended wear time.**Usage:** Barrier comes with a transparent adhesive that provides security and flexibility while preserving the integrity of the surrounding skin. Belt loops on all skin barriers.**Precautions:** Latex Free.**Size:** 60mm flange, 15-43mm stoma**Series:** Blue**Standard Box Quantity:** 5

## COL14308

## Coloplast - Wafer/Barrier ( CTF only)

### Easiflex Two-Piece Skin Barrier With Flange (30mm -Purple) 5/Box (Cut Up To 25mm)

**Manufacturer:** Coloplast **Manufacturer Code:** 14308

**Features:** Easiflex pediatric baseplate with adhesive coupling. The coupling flange can be lifted so that the pouch can be applied without pressure on the peristomal area. Secure to use - contains a security channel, preventing the baseplate from curling up and thus leakage. Soft and comfortable as a one-piece pouch. Hygienic and easy to clean streamlined surface of the baseplate.

**Usage:** A simple, soft and secure system – for pediatrics from newborns to children up to five years of age.

**Precautions:** Requires Assura pediatric adhesive pouch.

**Size:** 27mm coupling fits stomas 0-25mm

**Series:**

**Standard Box Quantity:** 5



## COL16941

## Coloplast - Wafer/Barrier ( CTF only)

### Mio 2p Convex Deep CTF 40mm flange 10-20mm

**Manufacturer:** Coloplast **Manufacturer Code:** 16941

**Features:** Sensura Mio Click adaptive convex baseplate that provides stability around the stoma while being flexible. It has a curved shape that fits securely to uneven skin areas, deep-seated areas and stomas that need support or help to protrude. The elastic adhesive fits body contours.

**Usage:** Cut to fit. Deep convexity for uneven skin areas, deep-seated areas and stomas that need support or help to protrude. Use with SenSura Mio Click pouches.

**Precautions:** Latex free.

**Size:** 40mm flange fits stomas 10-20mm

**Series:** Green

**Standard Box Quantity:** 5



## COL16951

## Coloplast - Wafers/Barriers ( CTF only)

### Mio 2p Convex Deep CTF 50mm flange 15-30mm

**Manufacturer:** Coloplast **Manufacturer Code:** 16951

**Features:** Sensura Mio Click adaptive convex baseplate that provides stability around the stoma while being flexible. It has a curved shape that fits securely to uneven skin areas, deep-seated areas and stomas that need support or help to protrude. The elastic adhesive fits body contours.

**Usage:** Cut to fit. Deep convexity for uneven skin areas, deep-seated areas and stomas that need support or help to protrude. Use with SenSura Mio Click pouches.

**Precautions:** Latex free.

**Size:** 50mm flange fits stomas 15-30mm

**Series:** Red

**Standard Box Quantity:** 5



## COL16961

## Coloplast - Wafer/Barrier ( CTF only)

### Mio 2p Convex Deep CTF 60mm flange 15-40mm

**Manufacturer:** Coloplast **Manufacturer Code:** 16961

**Features:** Sensura Mio Click adaptive convex baseplate that provides stability around the stoma while being flexible. It has a curved shape that fits securely to uneven skin areas, deep-seated areas and stomas that need support or help to protrude. The elastic adhesive fits body contours.

**Usage:** Cut to fit. Deep convexity for uneven skin areas, deep-seated areas and stomas that need support or help to protrude. Use with SenSura Mio Click pouches.

**Precautions:** Latex free.

**Size:** 60mm flange fits stomas 15-40mm

**Series:** Blue

**Standard Box Quantity:** 5



## CON401543

## ConvaTec - Sur-Fit - Pouches

### Natura Urostomy Pouch w/ Accuseal Tap, Standard, transparent, 38mm (1 1/2")

**Manufacturer:** ConvaTec **Manufacturer Code:** 401543

**Features:** Natura Urostomy Pouch. Standard, Accuseal Tap with valve, with 1-sided comfort panel transparent. Includes anti-reflux valve, comfort panels and Accuseal drainage tap.

**Usage:** Anti-Reflux Valve prevents urine from returning to top of pouch around the stoma. Coupling ring provides audible click confirming secure connection to skin barrier. Use with Natura skin barriers.

**Precautions:** Latex Free.

**Size:** 38mm flange

**Series:** Orange

**Standard Box Quantity:** 10



## CON401544

## ConvaTec - Sur-Fit - Pouches

### Natura Urostomy Pouch w/ Accuseal Tap, Standard, transparent, 45mm (1 3/4")

**Manufacturer:** ConvaTec **Manufacturer Code:** 401544

**Features:** Natura Urostomy Pouch. Standard, Accuseal Tap with valve, with 1-sided comfort panel transparent. Includes anti-reflux valve, comfort panels and Accuseal drainage tap.

**Usage:** Anti-Reflux Valve prevents urine from returning to top of pouch around the stoma. Coupling ring provides audible click confirming secure connection to skin barrier. Use with Natura skin barriers.

**Precautions:** Latex Free.

**Size:** 45mm flange

**Series:** Green

**Standard Box Quantity:** 10



## CON401545

## ConvaTec - Sur-Fit - Pouches

**Natura Urostomy Pouch w/ Accuseal Tap, Standard, transparent, 57mm (2 1/4")****Manufacturer:** ConvaTec **Manufacturer Code:** 401545**Features:** Natura Urostomy Pouch. Standard, Accuseal Tap with valve, with 1-sided comfort panel transparent. Includes anti-reflux valve, comfort panels and Accuseal drainage tap.**Usage:** Anti-Reflux Valve prevents urine from returning to top of pouch around the stoma. Coupling ring provides audible click confirming secure connection to skin barrier. Use with Natura skin barriers.**Precautions:** Latex Free.**Size:** 57mm flange**Series:** Red**Standard Box Quantity:** 10

## CON401557

## ConvaTec - Sur-Fit - Pouches

**Natura High Output Drainable Pouch w/filter 45mm (1 3/4")****Manufacturer:** ConvaTec **Manufacturer Code:** 401557**Features:** Natura Two-Piece Drainable Pouch with filter. For high output, with 1-sided comfort panel, anti-reflux valve, replaceable filter, outlet with spout & cap. Pouch snaps to skin barrier for audible security.**Usage:** Used for the management of high stomal output due to short bowel syndrome and other causes. Use with Natura skin barriers**Precautions:** Filters in pouches must be protected by a filter tab when bathing. Latex Free.**Size:** 45mm flange**Series:** Green**Standard Box Quantity:** 5

## CON401558

## ConvaTec - Sur-Fit - Pouches

**Natura High Output Drainable Pouch w/filter 57mm (2 1/4")****Manufacturer:** ConvaTec **Manufacturer Code:** 401558**Features:** Natura Two-Piece Drainable Pouch with filter. For high output, with 1-sided comfort panel, anti-reflux valve, replaceable filter, outlet with spout & cap. Pouch snaps to skin barrier for audible security.**Usage:** Used for the management of high stomal output due to short bowel syndrome and other causes. Use with Natura skin barriers**Precautions:** Filters in pouches must be protected by a filter tab when bathing. Latex Free.**Size:** 57mm flange**Series:** Red**Standard Box Quantity:** 5

## CON416406

## ConvaTec - Sur-Fit - Pouches

### Natura Plus Closed-end Pouch, opaque, standard, 45mm - with filter

**Manufacturer:** ConvaTec **Manufacturer Code:** 416406

**Features:** Eliminates the need to manipulate a tail closure and emptying a pouch. Filter reduces odor and gas buildup.

**Usage:** Closed-end pouches are designed for one-time usage, which makes them ideal for everyday use, special occasions or for intimate moments.

**Precautions:** Latex Free.

**Size:** 45mm flange

**Series:** Green

**Standard Box Quantity:** 30



## CON416409

## ConvaTec - Sur-Fit - Pouches

### Natura Plus Closed-end Pouch, opaque, standard, 57mm - with filter

**Manufacturer:** ConvaTec **Manufacturer Code:** 416409

**Features:** Eliminates the need to manipulate a tail closure and emptying a pouch. Filter reduces odor and gas buildup.

**Usage:** Closed-end pouches are designed for one-time usage, which makes them ideal for everyday use, special occasions or for intimate moments.

**Precautions:** Latex Free.

**Size:** 57mm flange

**Series:** Red

**Standard Box Quantity:** 30



## CON416412

## ConvaTec - Sur-Fit - Pouches

### Natura Plus Closed-end Pouch, opaque, standard, 70mm - with filter

**Manufacturer:** ConvaTec **Manufacturer Code:** 416412

**Features:** Eliminates the need to manipulate a tail closure and emptying a pouch. Filter reduces odor and gas buildup.

**Usage:** Closed-end pouches are designed for one-time usage, which makes them ideal for everyday use, special occasions or for intimate moments.

**Precautions:** Latex Free.

**Size:** 70mm flange

**Series:** Blue

**Standard Box Quantity:** 30



## CON416415

## ConvaTec - Sur-Fit - Pouches

### Natura Drainable Pouch w/InvisiClose and Lock-it Pocket , opaque, standard, 38mm - with filter

**Manufacturer:** ConvaTec **Manufacturer Code:** 416415

**Features:** Natura Drainable Pouch with Filter. The InvisiClose clipless tail closure offers security, ease of drainage, comfort and cleanliness. The easy-to-open outlet and tail design help control flow and reduce splashing. An additional security flap is designed to provide comfort and protect skin and clothing from locking material.

**Usage:** A simple snap-off, snap on design allows users to change the pouch quickly to match activities without removing the skin barrier from the skin. These pouches are recommended for ileostomy and colostomy. Use with Natura skin barriers.

**Precautions:** Latex Free.

**Size:** 38mm flange

**Series:** Orange

**Standard Box Quantity:** 10



## CON416416

## ConvaTec - Sur-Fit - Pouches

### Natura Drainable Pouch w/InvisiClose and Lock-it Pocket , transparent, standard, 45mm - with filter

**Manufacturer:** ConvaTec **Manufacturer Code:** 416416

**Features:** Natura Drainable Pouch with Filter. The InvisiClose clipless tail closure offers security, ease of drainage, comfort and cleanliness. The easy-to-open outlet and tail design help control flow and reduce splashing. An additional security flap is designed to provide comfort and protect skin and clothing from locking material.

**Usage:** A simple snap-off, snap on design allows users to change the pouch quickly to match activities without removing the skin barrier from the skin. These pouches are recommended for ileostomy and colostomy. Use with Natura skin barriers.

**Precautions:** Latex Free.

**Size:** 45mm flange

**Series:** Green

**Standard Box Quantity:** 10



## CON416417

## ConvaTec - Sur-Fit - Pouches

### Natura Drainable Pouch w/InvisiClose and Lock-it Pocket , opaque, standard, 45mm - with filter

**Manufacturer:** ConvaTec **Manufacturer Code:** 416417

**Features:** Natura Drainable Pouch with Filter. The InvisiClose clipless tail closure offers security, ease of drainage, comfort and cleanliness. The easy-to-open outlet and tail design help control flow and reduce splashing. An additional security flap is designed to provide comfort and protect skin and clothing from locking material.

**Usage:** A simple snap-off, snap on design allows users to change the pouch quickly to match activities without removing the skin barrier from the skin. These pouches are recommended for ileostomy and colostomy. Use with Natura skin barriers.

**Precautions:** Latex Free.

**Size:** 45mm flange

**Series:** Green

**Standard Box Quantity:** 10



## CON416419

## ConvaTec - Sur-Fit - Pouches

**Natura Plus (57mm) Drainable Pouch, Clipless, W/Filter, Transparent W/ Body Side Cloth Comfort Panel 10/Box****Manufacturer:** Convatec **Manufacturer Code:** 416419**Features:** The Natura® Drainable Pouch with Filter and InvisiClose® clipless tail closure offers all the benefits of the InvisiClose® clipless tail closure plus the added comfort, convenience and confidence of ConvaTec's best-in-class filter.**Usage:** The InvisiClose® clipless tail closure offers double security, ease of drainage, comfort and cleanliness. The easy-to-open outlet end strips and tail design help control flow and reduce splashing. The locking mechanism security flap is designed to provide comfort and protect skin and clothing from locking material.**Precautions:** Latex Free.**Size:** 57mm**Series:****Standard Box Quantity:** 10

## CON416420

## ConvaTec - Sur-Fit - Pouches

**Natura Drainable Pouch w/InvisiClose and Lock-it Pocket , opaque, standard, 57mm - with filter****Manufacturer:** ConvaTec **Manufacturer Code:** 416420**Features:** Natura Drainable Pouch with Filter. The InvisiClose clipless tail closure offers security, ease of drainage, comfort and cleanliness. The easy-to-open outlet and tail design help control flow and reduce splashing. An additional security flap is designed to provide comfort and protect skin and clothing from locking material.**Usage:** A simple snap-off, snap on design allows users to change the pouch quickly to match activities without removing the skin barrier from the skin. These pouches are recommended for ileostomy and colostomy. Use with Natura skin barriers.**Precautions:** Latex Free.**Size:** 57mm flange**Series:** Red**Standard Box Quantity:** 10

## CON416422

## ConvaTec - Sur-Fit - Pouches

**Natura Plus (70mm) Drainable Pouch, Clipless, W/Filter, Transparent W/ Body Side Cloth Comfort Panel 10/Box****Manufacturer:** Convatec **Manufacturer Code:** 416422**Features:** The Natura® Drainable Pouch with Filter and InvisiClose® clipless tail closure offers all the benefits of the InvisiClose® clipless tail closure plus the added comfort, convenience and confidence of ConvaTec's best-in-class filter.**Usage:** The InvisiClose® clipless tail closure offers double security, ease of drainage, comfort and cleanliness. The easy-to-open outlet end strips and tail design help control flow and reduce splashing. The locking mechanism security flap is designed to provide comfort and protect skin and clothing from locking material.**Precautions:** Latex Free.**Size:** 70mm**Series:****Standard Box Quantity:** 10

## CON416423

## ConvaTec - Sur-Fit - Pouches

### Natura Drainable Pouch w/InvisiClose and Lock-it Pocket , opaque, standard, 70mm - with filter

**Manufacturer:** ConvaTec **Manufacturer Code:** 416423

**Features:** Natura Drainable Pouch with Filter. The InvisiClose clipless tail closure offers security, ease of drainage, comfort and cleanliness. The easy-to-open outlet and tail design help control flow and reduce splashing. An additional security flap is designed to provide comfort and protect skin and clothing from locking material.

**Usage:** A simple snap-off, snap on design allows users to change the pouch quickly to match activities without removing the skin barrier from the skin. These pouches are recommended for ileostomy and colostomy. Use with Natura skin barriers.

**Precautions:** Latex Free.

**Size:** 70mm flange

**Series:** Blue

**Standard Box Quantity:** 10



## CON416718

## ConvaTec - Sur-Fit - Pouches

### Esteem Plus One Piece - Flat, Cut To Fit (60x70mm) Drainable Pouch, Clipless, W/Filter, Transparent With Body Side Cloth Comfort Panel 10/Box

**Manufacturer:** ConvaTec **Manufacturer Code:** 416718

**Features:** Cut-to-Fit, modified Stomahesive® Skin Barrier; 12" pouch with 1-sided comfort panel, InvisiClose® Tail Closure and filter.

**Usage:** Secure and easy to use. Combines the skin barrier and pouch in a single unit, allowing for a simple, secure, and comfortable experience. Gently adheres to skin and protects it from break down.

**Precautions:** Latex Free.

**Size:** 20-70mm

**Series:**

**Standard Box Quantity:** 10



## CON650803

## ConvaTec - Sur-Fit - Pouches

### Flange & Pouch, Active Life One Piece Transparent Pouch Cut Up To 100mm (4") 10/Box

**Manufacturer:** ConvaTec **Manufacturer Code:** 650803

**Features:** Active Life® One-Piece Drainable Pouch. Cut-to-fit, Stomahesive®, with tape collar, with 1-sided comfort panel, 35.5 cm (14"), tail clip. A lightweight, flexible, one-piece system, Active Life® combines the skin barrier and the pouch into one simple, easy-to-manage system. Pouch allows for draining.

**Usage:** Offered with a Stomahesive® Skin Barrier for semi-formed to formed stool. Pouch comfort panel is designed to be odor-proof and quiet, to maintain discretion.

**Precautions:** Product does not contain latex.

**Size:** 19 to 100 mm

**Series:**

**Standard Box Quantity:** 10



## CON125258

## ConvaTec - Sur-Fit - Wafer/Barrier

### Stomahesive Flex 38mm Flange CTF 22-25mm stoma

**Manufacturer:** ConvaTec **Manufacturer Code:** 125258

**Features:** Natura Stomahesive cut-to-fit skin barrier. The outer protective coating helps keep the skin barrier in place to provide added security when showering, bathing or swimming.

**Usage:** Adheres to both dry and moist skin. Stomahesive skin barriers are recommended for people whose stoma output is semi-formed to formed. It is gentle on skin yet holds firmly. Compatible with Natura pouches.

**Precautions:** Latex Free.

**Size:** 38mm flange fits stomas 22-25mm

**Series:** Orange

**Standard Box Quantity:** 10



## CON404593

## ConvaTec - Sur-Fit - Wafer/Barrier

### Flange, Sur-Fit Natura Moldable Durahesive Convex, 45mm (Stoma Size 22-33mm) 10/Box

**Manufacturer:** Convatec **Manufacturer Code:** 404593

**Features:** The SUR-FIT Natura® ostomy system is our latest skin barrier technology. The plastic coupling ring allows the pouch and skin barrier to snap together for audible security.

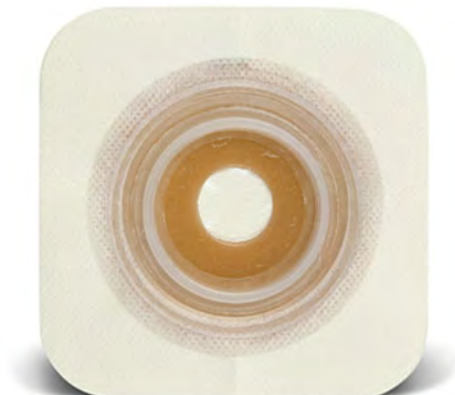
**Usage:** Designed for stoma output which is mostly liquid. Durahesive® skin barriers swell up to better protect the stoma and peristomal skin. Convex is good for people with a recessed or flat stoma. Moldable allows for improved skin protection over traditional barriers.

**Precautions:**

**Size:** 44 mm

**Series:**

**Standard Box Quantity:** 10



## CON404594

## ConvaTec - Sur-Fit - Wafers/Barrier s

### Flange, Sur-Fit Natura Moldable Durahesive Convex, 57mm (Stoma Size 33-45mm) 10/Box

**Manufacturer:** Convatec **Manufacturer Code:** 404594

**Features:** The SUR-FIT Natura® ostomy system is our latest skin barrier technology. The plastic coupling ring allows the pouch and skin barrier to snap together for audible security.

**Usage:** Designed for stoma output which is mostly liquid. Durahesive® skin barriers swell up to better protect the stoma and peristomal skin. Convex is good for people with a recessed or flat stoma. Moldable allows for improved skin protection over traditional barriers.

**Precautions:**

**Size:** 57 mm

**Series:**

**Standard Box Quantity:** 10



## CON411803

## ConvaTec - Sur-Fit - Wafer/Barrier

### Flange, Sur-Fit Natura Moldable Stomahesive Flat, 45mm (Stoma Size 22-33mm) 10/Box

**Manufacturer:** Convatec **Manufacturer Code:** 411803

**Features:** The Natura® skin barrier with ConvaTec Moldable Technology™ provides a worry-free fit because the molded adhesive with Rebounding Memory Technology™ gently hugs individual stoma contours, creating a secure, personalized fit.

**Usage:** Moldable allows for improved skin protection over traditional barriers. Stomahesive® skin barriers are recommended for people whose stoma output is semi-formed to formed.

**Precautions:** Latex Free.

**Size:** 45mm

**Series:**

**Standard Box Quantity:** 10



## CON411805

## ConvaTec - Sur-Fit - Wafer/Barrier

### Flange, Sur-Fit Natura Moldable Stomahesive Flat, 57mm (Stoma Size 33-45mm) 10/Box

**Manufacturer:** Convatec **Manufacturer Code:** 411805

**Features:** The Natura® skin barrier with ConvaTec Moldable Technology™ provides a worry-free fit because the molded adhesive with Rebounding Memory Technology™ gently hugs individual stoma contours, creating a secure, personalized fit.

**Usage:** Moldable allows for improved skin protection over traditional barriers. Stomahesive® skin barriers are recommended for people whose stoma output is semi-formed to formed.

**Precautions:** Latex Free.

**Size:** 57mm

**Series:**

**Standard Box Quantity:** 10



## CON411807

## ConvaTec - Sur-Fit - Wafers/Barriers

### Stomahesive Flex 70mm flange, moldable 45-56mm stoma

**Manufacturer:** ConvaTec **Manufacturer Code:** 411807

**Features:** Natura Stomahesive moldable accordion skin barrier. Moldable skin barriers allow the stoma opening to be molded to the shape and size of the stoma without the need for scissors.

**Usage:** Moldable allows for improved skin protection over traditional barriers. Adheres to both dry and moist skin. Stomahesive skin barriers are recommended for people whose stoma output is semi-formed to formed. It is gentle on skin yet holds firmly. Compatible with Natura pouches.

**Precautions:** Latex Free.

**Size:** 70mm flange fits stomas 45-56mm

**Series:** Blue

**Standard Box Quantity:** 10



## CON413167

## ConvaTec - Sur-Fit - Wafer/Barrier

### Flange, Sur-Fit Natura Durahesive Flat 57mm (2 1/4") , Cut To Fit Up To 45mm 10/Box

**Manufacturer:** Convatec **Manufacturer Code:** 413167

**Features:** SUR-FIT Natura Two-Piece Durahesive Skin Barrier. The SUR-FIT Natura® ostomy system is a comprehensive product line with our latest skin barrier technologies. The plastic coupling ring allows the pouch and skin barrier to snap together for audible security.

**Usage:** Durahesive® skin barriers are designed for people whose stoma output is mostly liquid. Unlike other skin barriers that can breakdown around liquid output, Durahesive® skin barriers swell up or "Turtleneck" to further protect the stoma and peristomal skin.

**Precautions:** Latex Free.

**Size:** 57mm

**Series:**

**Standard Box Quantity:** 10



## CON421039

## ConvaTec - Sur-Fit - Wafer/Barrier

### Durahesive Accordion Moldable Small

**Manufacturer:** ConvaTec **Manufacturer Code:** 421039

**Features:** Natura Durahesive moldable accordion skin barrier. The Accordion flange makes pouch application much easier and more comfortable. In the down position, it is low profile, flexible and conforms to body contours.

**Usage:** Ideal for tender post-op abdomens. Compatible with Natura pouches. Durahesive moldable skin barrier maintains an effective protective seal longer than conventional skin barriers.

**Precautions:** Latex Free.

**Size:** 57mm flange fits stomas 13-22mm

**Series:** Red

**Standard Box Quantity:** 10



## CON421040

## ConvaTec - Sur-Fit - Wafers/Barriers

### Durahesive Accordion Moldable Medium

**Manufacturer:** ConvaTec **Manufacturer Code:** 421040

**Features:** Natura Durahesive moldable accordion skin barrier. The Accordion flange makes pouch application much easier and more comfortable. In the down position, it is low profile, flexible and conforms to body contours.

**Usage:** Ideal for tender post-op abdomens. Compatible with Natura pouches. Durahesive moldable skin barrier maintains an effective protective seal longer than conventional skin barriers.

**Precautions:** Latex Free.

**Size:** 57mm flange fits stomas 22-33mm

**Series:** Red

**Standard Box Quantity:** 10



## CON421041

## ConvaTec - Sur-Fit - Wafer/Barrier

### Durahesive Accordion Moldable Large

**Manufacturer:** ConvaTec **Manufacturer Code:** 421041

**Features:** Natura Durahesive moldable accordion skin barrier. The Accordion flange makes pouch application much easier and more comfortable. In the down position, it is low profile, flexible and conforms to body contours.

**Usage:** Ideal for tender post-op abdomens. Compatible with Natura pouches. Durahesive moldable skin barrier maintains an effective protective seal longer than conventional skin barriers.

**Precautions:** Latex Free.

**Size:** 70mm flange fits stomas 33-45mm

**Series:** Blue

**Standard Box Quantity:** 10



## CON421454

## ConvaTec - Sur-Fit - Wafer/Barrier

### Durahesive Accordion CTF, 45mm, stomas up to 21mm

**Manufacturer:** Convatec **Manufacturer Code:** 421454

**Features:** Natura Durahesive cut-to-fit accordion skin barrier. The Accordion flange makes pouch application much easier and more comfortable. In the down position, it is low profile, flexible and conforms to body contours.

**Usage:** Ideal for tender post-op abdomens. Compatible with our Natura pouches. Durahesive Cut-to-Fit Skin Barrier maintains an effective protective seal longer than conventional skin barriers.

**Precautions:** Latex Free.

**Size:** 45mm flange fits stomas up to 21mm

**Series:**

**Standard Box Quantity:** 10



## CON421458

## ConvaTec - Sur-Fit - Wafers/Barriers

### Durahesive Accordion CTF, 57mm, stomas up to 33mm

**Manufacturer:** ConvaTec **Manufacturer Code:** 421458

**Features:** Natura Durahesive cut-to-fit accordion skin barrier. The Accordion flange makes pouch application much easier and more comfortable. In the down position, it is low profile, flexible and conforms to body contours.

**Usage:** Ideal for tender post-op abdomens. Compatible with our Natura pouches. Durahesive Cut-to-Fit Skin Barrier maintains an effective protective seal longer than conventional skin barriers.

**Precautions:** Latex Free.

**Size:** 57mm flange fits stomas 22-33mm

**Series:** Red

**Standard Box Quantity:** 10



**Durahesive Accordion CTF, 70mm, stomas up to 45mm****Manufacturer:** ConvaTec **Manufacturer Code:** 421462**Features:** Natura Durahesive cut-to-fit accordion skin barrier. The Accordion flange makes pouch application much easier and more comfortable. In the down position, it is low profile, flexible and conforms to body contours.**Usage:** Ideal for tender post-op abdomens. Compatible with our Natura pouches. Durahesive Cut-to-Fit Skin Barrier maintains an effective protective seal longer than conventional skin barriers.**Precautions:** Latex Free.**Size:** 70mm flange fits stomas 33-45mm**Series:** Blue**Standard Box Quantity:** 10**New Image Drainable Pouch, no filter, 102mm, ultra clear****Manufacturer:** Hollister **Manufacturer Code:** 18006**Features:** New Image Lock'n Roll drainable pouch. Easy to close: simply roll it three times in the same direction, press from the middle out and feel the seal. Easy to empty: lightly pinch the sides of the leak-proof outlet for easy control of content flow. Easy to clean by wiping it with a damp tissue.**Usage:** Use with any New Image two-piece skin barrier with same flange size. These pouches are most suitable for colostomies or ileostomies.**Precautions:** Latex Free.**Size:** 102mm flange**Series:** Yellow**Standard Box Quantity:** 10**New Image Drainable Pouch, no filter, 44mm, beige****Manufacturer:** Hollister **Manufacturer Code:** 18112**Features:** New Image Lock'n Roll drainable pouch. Easy to close: simply roll it three times in the same direction, press from the middle out and feel the seal. Easy to empty: lightly pinch the sides of the leak-proof outlet for easy control of content flow. Easy to clean by wiping it with a damp tissue.**Usage:** Use with any New Image two-piece skin barrier with same flange size. These pouches are most suitable for colostomies or ileostomies.**Precautions:** Latex Free.**Size:** 44mm flange**Series:** Green**Standard Box Quantity:** 10

## HOL18113

## Hollister - Pouches

### New Image Drainable Pouch, no filter, 57mm, beige

**Manufacturer:** Hollister **Manufacturer Code:** 18113

**Features:** New Image Lock'n Roll drainable pouch. Easy to close: simply roll it three times in the same direction, press from the middle out and feel the seal. Easy to empty: lightly pinch the sides of the leak-proof outlet for easy control of content flow. Easy to clean by wiping it with a damp tissue.

**Usage:** Use with any New Image two-piece skin barrier with same flange size. These pouches are most suitable for colostomies or ileostomies.

**Precautions:** Latex Free.

**Size:** 57mm flange

**Series:** Red

**Standard Box Quantity:** 10



## HOL18114

## Hollister - Pouches

### New Image Drainable Pouch, no filter, 70mm, beige

**Manufacturer:** Hollister **Manufacturer Code:** 18114

**Features:** New Image Lock'n Roll drainable pouch. Easy to close: simply roll it three times in the same direction, press from the middle out and feel the seal. Easy to empty: lightly pinch the sides of the leak-proof outlet for easy control of content flow. Easy to clean by wiping it with a damp tissue.

**Usage:** Use with any New Image two-piece skin barrier with same flange size. These pouches are most suitable for colostomies or ileostomies.

**Precautions:** Latex Free.

**Size:** 70mm flange

**Series:** Blue

**Standard Box Quantity:** 10



## HOL18132

## Hollister - Pouches

### New Image Drainable Pouch, no filter, 44mm, transparent

**Manufacturer:** Hollister **Manufacturer Code:** 18132

**Features:** New Image Lock'n Roll transparent drainable pouch. Easy to close: simply roll it three times in the same direction, press from the middle out and feel the seal. Easy to empty: lightly pinch the sides of the leak-proof outlet for easy control of content flow. Easy to clean by wiping it with a damp tissue.

**Usage:** Use with any New Image two-piece skin barrier with same flange size. These pouches are most suitable for colostomies or ileostomies.

**Precautions:** Latex Free.

**Size:** 44mm flange

**Series:** Green

**Standard Box Quantity:** 10



## HOL18133

## Hollister - Pouches

### New Image Drainable Pouch, no filter, 57mm, transparent

**Manufacturer:** Hollister **Manufacturer Code:** 18133

**Features:** New Image Lock'n Roll transparent drainable pouch. Easy to close: simply roll it three times in the same direction, press from the middle out and feel the seal. Easy to empty: lightly pinch the sides of the leak-proof outlet for easy control of content flow. Easy to clean by wiping it with a damp tissue.

**Usage:** Use with any New Image two-piece skin barrier with same flange size. These pouches are most suitable for colostomies or ileostomies.

**Precautions:** Latex Free.

**Size:** 57mm flange

**Series:** Red

**Standard Box Quantity:** 10



## HOL18134

## Hollister - Pouches

### New Image Drainable Pouch, no filter, 70mm, transparent

**Manufacturer:** Hollister **Manufacturer Code:** 18134

**Features:** New Image Lock'n Roll transparent drainable pouch. Easy to close: simply roll it three times in the same direction, press from the middle out and feel the seal. Easy to empty: lightly pinch the sides of the leak-proof outlet for easy control of content flow. Easy to clean by wiping it with a damp tissue.

**Usage:** Use with any New Image two-piece skin barrier with same flange size. These pouches are most suitable for colostomies or ileostomies.

**Precautions:** Latex Free.

**Size:** 70mm flange

**Series:** Blue

**Standard Box Quantity:** 10



## HOL18182

## Hollister - Pouches

### New Image Drainable Pouch with filter, 44mm, beige

**Manufacturer:** Hollister **Manufacturer Code:** 18182

**Features:** New Image Lock'n Roll drainable pouch with filter. Easy to close: simply roll it three times in the same direction, press from the middle out and feel the seal. Easy to empty: lightly pinch the sides of the leak-proof outlet for easy control of content flow. Easy to clean by wiping it with a damp tissue.

**Usage:** Use with any New Image two-piece skin barrier with same flange size. Simple for all drainable pouch users including those with vision and dexterity problems.

**Precautions:** Latex Free.

**Size:** 44mm flange

**Series:** Green

**Standard Box Quantity:** 10



## HOL18183

## Hollister - Pouches

### New Image Drainable Pouch with filter, 57mm, beige

**Manufacturer:** Hollister **Manufacturer Code:** 18183

**Features:** New Image Lock'n Roll drainable pouch with filter. Easy to close: simply roll it three times in the same direction, press from the middle out and feel the seal. Easy to empty: lightly pinch the sides of the leak-proof outlet for easy control of content flow. Easy to clean by wiping it with a damp tissue.

**Usage:** Use with any New Image two-piece skin barrier with same flange size. Simple for all drainable pouch users including those with vision and dexterity problems.

**Precautions:** Latex Free.

**Size:** 57mm flange

**Series:** Red

**Standard Box Quantity:** 10



## HOL18184

## Hollister - Pouches

### New Image Drainable Pouch with filter, 70mm, beige

**Manufacturer:** Hollister **Manufacturer Code:** 18184

**Features:** New Image Lock'n Roll drainable pouch with filter. Easy to close: simply roll it three times in the same direction, press from the middle out and feel the seal. Easy to empty: lightly pinch the sides of the leak-proof outlet for easy control of content flow. Easy to clean by wiping it with a damp tissue.

**Usage:** Use with any New Image two-piece skin barrier with same flange size. Simple for all drainable pouch users including those with vision and dexterity problems.

**Precautions:** Latex Free.

**Size:** 70mm flange

**Series:** Blue

**Standard Box Quantity:** 10



## HOL18284

## Hollister - Pouches

### New Image Drainable Mini Pouch with filter (9") 70mm; beige

**Manufacturer:** Hollister **Manufacturer Code:** 18284

**Features:** New Image Lock'n Roll drainable mini pouch with filter. Easy to close: simply roll it three times in the same direction, press from the middle out and feel the seal. Easy to empty: lightly pinch the sides of the leak-proof outlet for easy control of content flow. Easy to clean by wiping it with a damp tissue.

**Usage:** Use with any New Image two-piece skin barrier with same flange size. Simple for all drainable pouch users including those with vision and dexterity problems.

**Precautions:** Latex Free.

**Size:** 70mm flange

**Series:** Blue

**Standard Box Quantity:** 20



## HOL18292

## Hollister - Pouches

### 2pc Pediatric Pouch Drainable w/Lock n' Roll closure & filter, 44mm flange, 18cm pouch length

**Manufacturer:** Hollister **Manufacturer Code:** 18292

**Features:** New Image Pediatric Lock'n Roll drainable pouch with filter. Easy to close: simply roll it three times in the same direction, press from the middle out and feel the seal. Easy to empty: lightly pinch the sides of the leak-proof outlet for easy control of content flow. Easy to clean by wiping it with a damp tissue.

**Usage:** For pediatric ostomy use. Use only with Pouchkins pediatric skin barrier.

**Precautions:** Latex Free.

**Size:** 44mm flange

**Series:** Green

**Standard Box Quantity:** 20



## HOL18372

## Hollister - Pouches

### New Image Closed Pouch with filter 9", 44mm, beige

**Manufacturer:** Hollister **Manufacturer Code:** 18372

**Features:** New Image closed pouch with filter. The inside of the pouch filter is covered with a membrane to help protect the filter from stool. The outside is water repellent to protect the filter during bathing or showering. ComfortWear panels are attached to both sides of the pouch.

**Usage:** Use with any New Image two-piece skin barrier with same flange size.

**Precautions:** Latex Free.

**Size:** 44mm flange

**Series:** Green

**Standard Box Quantity:** 30



## HOL18373

## Hollister - Pouches

### New Image Closed Pouch with filter, 9" 57mm, beige

**Manufacturer:** Hollister **Manufacturer Code:** 18373

**Features:** New Image closed pouch with filter. The inside of the pouch filter is covered with a membrane to help protect the filter from stool. The outside is water repellent to protect the filter during bathing or showering. ComfortWear panels are attached to both sides of the pouch.

**Usage:** Use with any New Image two-piece skin barrier with same flange size.

**Precautions:** Latex Free.

**Size:** 57mm flange

**Series:** Red

**Standard Box Quantity:** 30



## HOL18374

## Hollister - Pouches

### New Image Closed Pouch with filter, 9" 70mm, beige

**Manufacturer:** Hollister **Manufacturer Code:** 18374

**Features:** New Image closed pouch with filter. The inside of the pouch filter is covered with a membrane to help protect the filter from stool. The outside is water repellent to protect the filter during bathing or showering. ComfortWear panels are attached to both sides of the pouch.

**Usage:** Use with any New Image two-piece skin barrier with same flange size.

**Precautions:** Latex Free.

**Size:** 70mm flange

**Series:**

**Standard Box Quantity:** 30



## HOL18412

## Hollister - Pouches

### New Image Urostomy Pouch, ComfortWear 44mm flange, beige

**Manufacturer:** Hollister **Manufacturer Code:** 18412

**Features:** New Image urostomy pouch with anti reflux valve and flow-control drain valve. ComfortWear panels and belt tabs. Odour-barrier, rustle-free film and anatomically shaped design.

**Usage:** Use with any New Image two-piece skin barrier with same flange size. Indicated for urostomy.

**Precautions:** Latex Free.

**Size:** 44mm flange

**Series:** Green

**Standard Box Quantity:** 10



## HOL18413

## Hollister - Pouches

### New Image Urostomy Pouch, ComfortWear, 57mm flange, beige

**Manufacturer:** Hollister **Manufacturer Code:** 18413

**Features:** New Image urostomy pouch with anti reflux valve and flow-control drain valve. ComfortWear panels and belt tabs. Odour-barrier, rustle-free film and anatomically shaped design.

**Usage:** Use with any New Image two-piece skin barrier with same flange size. Indicated for urostomy.

**Precautions:** Latex Free.

**Size:** 57mm flange

**Series:** Red

**Standard Box Quantity:** 10



## HOL18414

## Hollister - Pouches

### New Image Urostomy Pouch, ComfortWear, 70mm flange, beige

**Manufacturer:** Hollister **Manufacturer Code:** 18414

**Features:** New Image urostomy pouch with anti reflux valve and flow-control drain valve. ComfortWear panels and belt tabs. Odour-barrier, rustle-free film and anatomically shaped design.

**Usage:** Use with any New Image two-piece skin barrier with same flange size. Indicated for urostomy.

**Precautions:** Latex Free.

**Size:** 70mm flange

**Series:** Blue

**Standard Box Quantity:** 10



## HOL18903

## Hollister - Pouches

### Transparent Urinary Pouch 57mm (Red) 10/Box

**Manufacturer:** Hollister **Manufacturer Code:** 18903

**Features:** New multi-chamber design results in a more balanced collection of urine, and a lower pouch profile. Improved flow-control valve increases comfort against the body, so patients can do more, with less worry. Ultimate in comfort...it's like not wearing a pouch at all; Odor barrier, rustle-free film & ComfortWear Panels = quiet + comfort. Security and confidence assured with internal non-reflux valves and a drain valve that allows regulation of flow rate.

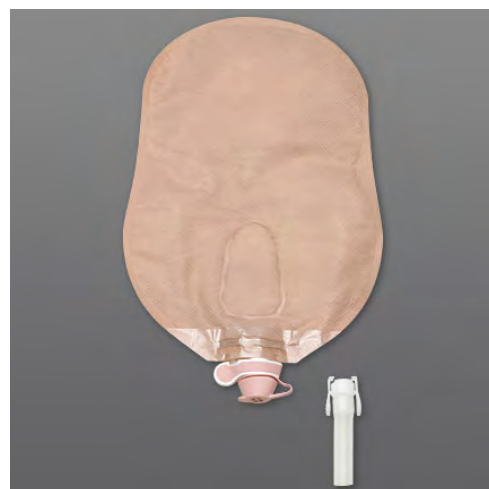
**Usage:** For urostomy patients.

**Precautions:** Opaque pouch shown in image. Not exactly as shown.

**Size:** 57 mm flange

**Series:** Red

**Standard Box Quantity:** 10



## HOL3761

## Hollister - Pouches

### 2pc Pediatric Skin Barrier w/out starter hole 44mm flange, 32mm barrier opening

**Manufacturer:** Hollister **Manufacturer Code:** 3761

**Features:** SoftFlex skin barrier without starter hole. Floating Flange. Cut-to-fit. Flexible. Skin barrier has the Floating Flange eliminating pressure on the abdomen. Locking system audibly "clicks" into place.

**Usage:** Superior skin care for child's sensitive skin. Comfortable for most active children

**Precautions:** Product can be worn while bathing or swimming.

**Size:** 44mm flange fits stomas up to 32mm

**Series:** Green

**Standard Box Quantity:** 5



## HOL3778

## Hollister - Pouches

### Newborn 1pc CTF, Pouch 35mm X 22mm barrier opening w/out starter hole

**Manufacturer:** Hollister **Manufacturer Code:** 3778

**Features:** Pouchkins One-Piece Drainable newborn pouch with Lock-n Roll closure. Superior skin care for child's sensitive skin: SoftFlex skin barrier is flexible and gentle.

**Usage:** Designed for newborn infants.

**Precautions:** Use only with SoftFlex skin barrier included.

**Size:** 35x22mm barrier opening

**Series:** 1pc

**Standard Box Quantity:** 15



## HOL3796

## Hollister - Pouches

### Pediatric, 1pc Drainable CTF Pouch, Lock-n-roll drain max 38mm stoma

**Manufacturer:** Hollister **Manufacturer Code:** 3796

**Features:** Pouchkins One-Piece Drainable Pediatric pouch with Lock-n Roll closure. Superior skin care for child's sensitive skin: SoftFlex skin barrier is flexible and gentle.

**Usage:** For pediatric ostomy use.

**Precautions:** Must order clamp separately unless ordering by the box.

**Size:** up to 38mm stoma

**Series:** 1pc

**Standard Box Quantity:** 10



## HOL3797

## Hollister - Pouches

### Pediatric, 1pc CTF, Urostomy Pouch, max 38mm stoma

**Manufacturer:** Hollister **Manufacturer Code:** 3797

**Features:** Pouchkins One-Piece urostomy Pediatric pouch. Superior skin care for child's sensitive skin: SoftFlex skin barrier is flexible and gentle.

**Usage:** For pediatric urostomy use.

**Precautions:** Latex Free.

**Size:** up to 38mm stoma

**Series:** 1pc

**Standard Box Quantity:** 10



## HOL11202

## Hollister - Wafer/Barrier (Cut to Fit only)

### CeraPlus, 44mm CTF Flat Skin Barrier with tape

**Manufacturer:** Hollister **Manufacturer Code:** 11202

**Features:** The CeraPlus skin barrier helps to decrease trans epidermal water loss from damaged or eroded skin. It is designed to maintain adhesive properties and help protect the skin's natural moisture barrier and help maintain good peristomal skin health.

**Usage:** Flat for protruding stomas. Use the CeraPlus skin barrier with New Image pouches.

**Precautions:** Latex Free.

**Size:** 44mm flange fits stomas up to 32mm

**Series:** Green

**Standard Box Quantity:** 5



## HOL11203

## Hollister - Wafers/Barriers (Cut to Fit only)

### CeraPlus, 57mm CTF Flat Skin Barrier with tape

**Manufacturer:** Hollister **Manufacturer Code:** 11203

**Features:** The CeraPlus skin barrier helps to decrease trans epidermal water loss from damaged or eroded skin. It is designed to maintain adhesive properties and help protect the skin's natural moisture barrier and help maintain good peristomal skin health.

**Usage:** Flat for protruding stomas. Use the CeraPlus skin barrier with New Image pouches.

**Precautions:** Latex Free.

**Size:** 57mm flange fits stomas up to 44mm

**Series:** Red

**Standard Box Quantity:** 5



## HOL11204

## Hollister - Wafer/Barrier (Cut to Fit only)

### CeraPlus, 70mm CTF Flat Skin Barrier with tape

**Manufacturer:** Hollister **Manufacturer Code:** 11204

**Features:** The CeraPlus skin barrier helps to decrease trans epidermal water loss from damaged or eroded skin. It is designed to maintain adhesive properties and help protect the skin's natural moisture barrier and help maintain good peristomal skin health.

**Usage:** Flat for protruding stomas. Use the CeraPlus skin barrier with New Image pouches.

**Precautions:** Latex Free.

**Size:** 70mm flange fits stomas up to 57mm

**Series:** Blue

**Standard Box Quantity:** 5



## HOL11402

## Hollister - Wafer/Barrier (Cut to Fit only)

### CeraPlus, 44mm CTF Convex Skin Barrier with tape

**Manufacturer:** Hollister **Manufacturer Code:** 11402

**Features:** The CeraPlus skin barrier helps to decrease trans epidermal water loss from damaged or eroded skin. It is designed to maintain adhesive properties and help protect the skin's natural moisture barrier and help maintain good peristomal skin health.

**Usage:** Convex for recessed stomas. Use the CeraPlus skin barrier with New Image pouches.

**Precautions:** Latex Free.

**Size:** 44mm flange fits stomas up to 25mm

**Series:** Green

**Standard Box Quantity:** 5



## HOL11403

## Hollister - Wafers/Barriers (Cut to Fit only)

### CeraPlus, 57mm CTF Convex Skin Barrier with tape

**Manufacturer:** Hollister **Manufacturer Code:** 11403

**Features:** The CeraPlus skin barrier helps to decrease trans epidermal water loss from damaged or eroded skin. It is designed to maintain adhesive properties and help protect the skin's natural moisture barrier and help maintain good peristomal skin health.

**Usage:** Convex for recessed stomas. Use the CeraPlus skin barrier with New Image pouches.

**Precautions:** Latex Free.

**Size:** 57mm flange fits stomas up to 38mm

**Series:** Red

**Standard Box Quantity:** 5



## HOL11404

## Hollister - Wafers/Barriers (Cut to Fit only)

### CeraPlus, 70mm CTF Convex Skin Barrier with tape

**Manufacturer:** Hollister **Manufacturer Code:** 11404

**Features:** The CeraPlus skin barrier helps to decrease trans epidermal water loss from damaged or eroded skin. It is designed to maintain adhesive properties and help protect the skin's natural moisture barrier and help maintain good peristomal skin health.

**Usage:** Convex for recessed stomas. Use the CeraPlus skin barrier with New Image pouches.

**Precautions:** Latex Free.

**Size:** 70mm flange fits stomas up to 51mm

**Series:** Blue

**Standard Box Quantity:** 5



## HOL14206

## Hollister - Wafers/Barriers (Cut to Fit only)

### New Image Flat Standard wear 102mm

**Manufacturer:** Hollister **Manufacturer Code:** 14206

**Features:** New Image skin barrier. Provides excellent adhesion to the skin and is designed to be worn for more than one day. The skin barrier has an integrated floating flange, which allows fingers to be placed under the flange, to help minimize pressure on the abdomen when attaching a pouch.

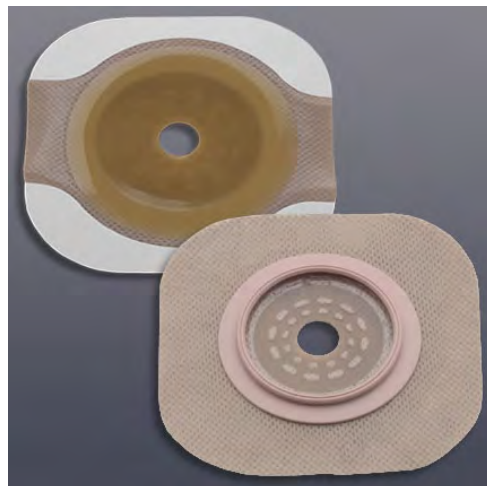
**Usage:** Flat for protruding stomas. Use with New Image pouches.

**Precautions:** Latex Free.

**Size:** 102mm flange fits stomas up to 89mm

**Series:** Yellow

**Standard Box Quantity:** 5



## HOL14603

## Hollister - Wafers/Barriers (Cut to Fit only)

### Flat Flexextend Skin Barrier With Flange/Tape Border 57mm (Red) 5/Box (Cut Up To 38mm)

**Manufacturer:** Hollister **Manufacturer Code:** 14603

**Features:** New Image Cut-to-Fit Flexextend Skin Barrier, Floating flange with tape. Locking system audibly "clicks" into place. Protects skin from irritating discharge. Suitable for urostomies and ileostomies. Floating Flange eliminates pressure on post-operative abdomen.

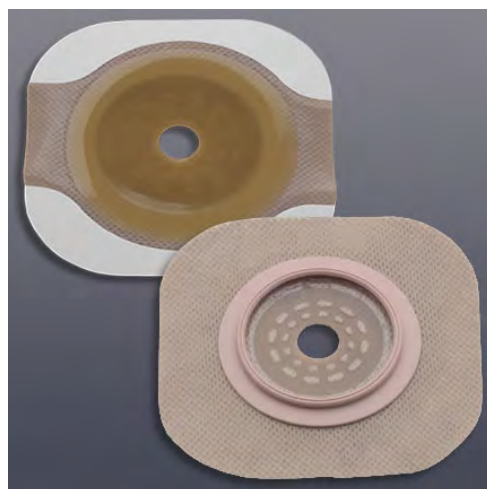
**Usage:** Resistant to discharge. Tape borders provide additional security to the attachment of the skin barrier to the skin. Floating flange allows fingers to support the flange while attaching the pouch.

**Precautions:** Not for use with skin prep wipes.

**Size:** 57mm flange, max 44mm stoma

**Series:** Red

**Standard Box Quantity:** 5



## HOL14604

## Hollister - Wafers/Barriers (Cut to Fit only)

### Flat Flexextend Skin Barrier With Flange/Tape Border 70mm (Blue) 5/Box (Cut Up To 57mm)

**Manufacturer:** Hollister **Manufacturer Code:** 14604

**Features:** New Image Cut-to-Fit Flexextend Skin Barrier, floating flange with tape. Secure locking system that audibly "clicks" into place. Protects skin from irritating discharge. Suitable for urostomies and ileostomies. Floating flange eliminates pressure on post-operative abdomen.

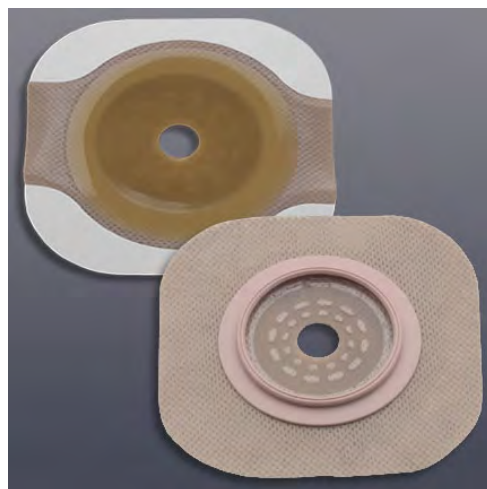
**Usage:** Resistant to discharge. Tape borders provide additional security. May be cut to the size and shape of the stoma. Floating flange allows fingers to support the flange while attaching the pouch.

**Precautions:** Not for use with skin prep wipes.

**Size:** 70 mm flange

**Series:** Blue

**Standard Box Quantity:** 5



## HOL14803

## Hollister - Wafers/Barriers (Cut to Fit only)

### Convex Flextend Skin Barrier With Flange/Tape Border 57mm (Red) 5/Box (Cut Up To 51mm)

**Manufacturer:** Hollister **Manufacturer Code:** 14803

**Features:** New Image Cut-to-fit Convex flextend Skin Barrier w/o tape. Built-in convexity for recessed, retracted and flush stomas. Cut-to-fit openings. Floating Flange eliminates pressure on post-operative abdomen. Protects skin from discharge. For urostomies and ileostomies.

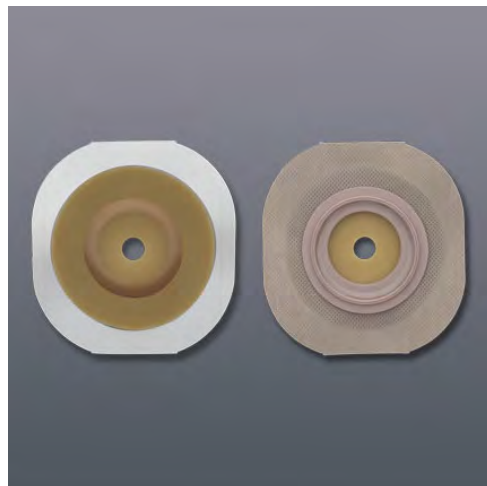
**Usage:** Resistant to discharge. May be cut to the size and shape of the stoma. Convexity indicated for stomas that are flush, recessed or retracted. Floating flange allows fingers to support the flange while attaching the pouch.

**Precautions:** Not for use with skin prep wipes.

**Size:** 57 mm flange

**Series:** Red

**Standard Box Quantity:** 5



## HOL14804

## Hollister - Wafers/Barriers (Cut to Fit only)

### Convex Flextend Skin Barrier With Flange/Tape Border 70mm (Blue) 5/Box (Cut Up To 51mm)

**Manufacturer:** Hollister **Manufacturer Code:** 14804

**Features:** New Image Cut-to-fit Convex flextend Skin Barrier w/o tape. Cut-to-fit openings. Secure locking system that audibly "clicks" into place. Protects skin from discharge. Suitable for urostomies and ileostomies. Floating flange eliminates pressure on post-operative abdomen.

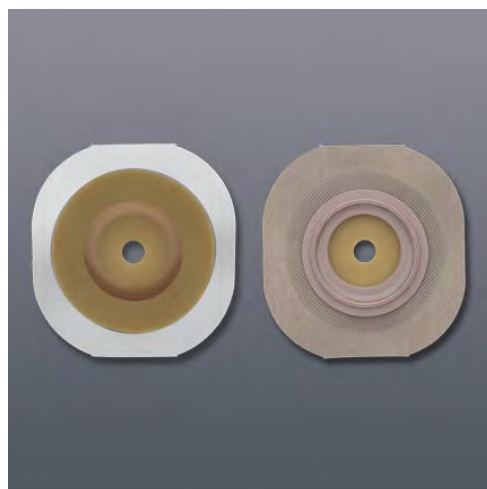
**Usage:** Resistant to discharge. May be cut to the size and shape of the stoma. Convexity for stomas that are flush, recessed or retracted. Floating flange allows fingers to support the flange while attaching the pouch.

**Precautions:** Not for use with skin prep wipes.

**Size:** 70 mm flange

**Series:** Blue

**Standard Box Quantity:** 5



## CON839251

## Wound Drainage Managers

### Convatec Eakin Wound Pouch 175mm x 110mm - Medium

**Manufacturer:** ConvaTec **Manufacturer Code:** 839251

**Features:** Eakin Wound Pouches provide a comfortable, skin friendly, cost effective and time saving procedure for managing fistulas, multiple or irregular stomas and high-output wounds.

**Usage:** Suitable for wounds up to 175x110mm with remote drainage attachment & tap closure. Skin-friendly adhesive securely holds tubes, drains and catheters in place on the skin. Fold and tuck closure.

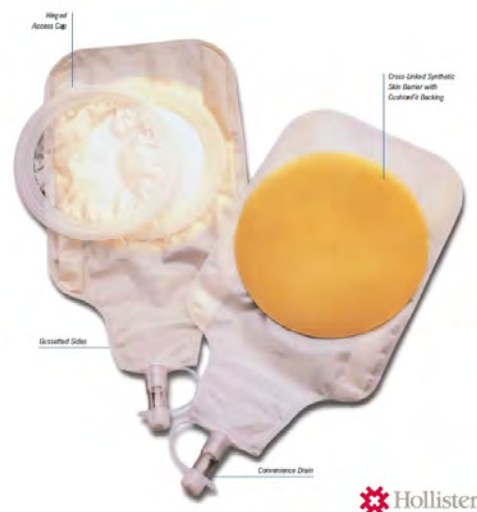
**Precautions:** Latex Free.

**Size:** Large for wounds up to 175 x 110mm

**Series:**

**Standard Box Quantity:** 10



**Convatec Eakin Wound Pouch 175mm x 110mm - Large****Manufacturer:** ConvaTec **Manufacturer Code:** 839262**Features:** Eakin Wound Pouches provide a comfortable, skin friendly, cost effective and time saving procedure for managing fistulas, multiple or irregular stomas and high-output wounds.**Usage:** Suitable for wounds up to 175x110mm with remote drainage attachment & tap closure. Skin-friendly adhesive securely holds tubes, drains and catheters in place on the skin. Remote drainage attachment.**Precautions:** Latex Free.**Size:** Large for wounds up to 175 x 110mm**Standard Box Quantity:** 10**Series:****Hollister Wound Drainage Collector with Adhesive Tape Border Sterile 9.5cm****Manufacturer:** Hollister **Manufacturer Code:** 9775**Features:** Protects patient by containing corrosive exudate while reducing exposure to bacteria and contaminants. Keeps patient dry and comfortable by collecting exudate, eliminating odour and conforming to the wound site. Features a convenience drain and reclosable cap that permits access to the wound site without removing the pouch.**Usage:** For the management of draining wounds, fistulae or draining wound sites.**Precautions:** Sterile. Stays in-situ up to 7 days.**Size:** Medium**Standard Box Quantity:** 10**Series:****Hollister Wound Drainage Collector with Adhesive Tape Border Sterile 10cm x 20cm****Manufacturer:** Hollister **Manufacturer Code:** 9777**Features:** Protects patient by containing corrosive exudate while reducing exposure to bacteria and contaminants. Keeps patient dry and comfortable by collecting exudate, eliminating odour and conforming to the wound site. Features a convenience drain and reclosable cap that permits access to the wound site without removing the pouch.**Usage:** For the management of draining wounds, fistulae or draining wound sites.**Precautions:** Sterile. Stays in-situ up to 7 days.**Size:** Large 10x20cm**Standard Box Quantity:** 3**Series:**