

Bath Seat with Back



LOC02
\$15/wk
\$30/mo

Bath Seat without Back



LOC03
\$15/wk
\$30/mo

Bath Transfer Bench with Back

Specify left or right
handle, bariatric model
available



LOC01
\$25/wk
\$50/mo

Commode, Bariatric

Requires pail purchased
separately: \$14.95,
Optional splash guard:
\$11.95



LOC09
\$30/wk
\$50/mo

Commode, Shower

Requires pail purchased
separately: \$14.95,
Optional splash guard:
\$11.95



LOC09
\$35/wk
\$60/mo

Commode, Stationary

Requires pail purchased
separately: \$14.95,
Optional splash guard:
\$11.95



LOC09
\$20/wk
\$40/mo

Commode, Wheeled

Requires pail purchased
separately: \$14.95,
Optional splash guard:
\$11.95



LOC10
\$30/wk
\$50/mo

Bed Helper Rail



LOC19
\$10/wk
\$20/mo

Bed Rails for Electric Bed



\$25/wk
\$35/mo

Bed, Electric Hospital 3-Position

Brown. Max. 350lbs.
Delivery fee includes set-up. Client must have space clear for bed or labour charge.



LOC14
\$195/wk
\$195/mo

Over Bed Table



LOC22
\$25/wk
\$40/mo

Lift Chair, Vinyl 2-Position

Client must have space clear and ready for chair.



LOC28
\$100/wk
\$175/mo

Patient Lift with Wheels

Requires sling purchased separately



LOC24
\$75/wk
\$250/mo

Ramp, 5 Feet Long

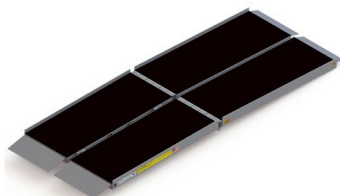
Recommend 1 inch rise per foot of ramp



LOC37
\$25/wk
\$35/mo

Ramp, 6 Feet Long

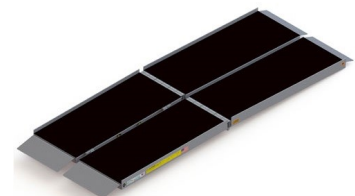
Recommend 1 inch rise per foot of ramp



LOC38
\$25/wk
\$45/mo

Ramp, 8 Feet Long

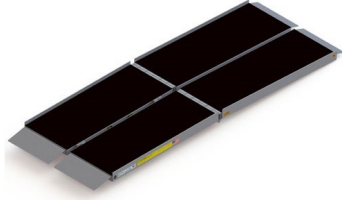
Recommend 1 inch rise per foot of ramp



LOC38
\$35/wk
\$45/mo

Ramp, 10 Feet Long

Recommend 1 inch rise
per foot of ramp



LOC38
\$40/wk
\$65/mo

Rollator with Seat and Handbrakes



LOC42
\$40/wk
\$65/mo

Scooter, 3-Wheel or 4-Wheel Electric

Batteries included



LOC35
\$95/wk
\$250/mo

Travel Buggy CITY

Batteries included



LOC34
\$200/wk
\$350/mo

Super Pole, White

Installs between floor
and ceiling by turning a
jackscrew



LOC55
\$45/wk
\$45/mo

Knee Walker, 4-Wheel Steerable



LOC70
\$45/wk
\$70/mo

Walker, 2-Wheel Lightweight Folding



LOC40
\$30/wk
\$40/mo

Wheelchair, Standard

16-, 18- or 20x16-inch
seat. Cushion not included.
Elevating legrests optional:
\$15/month per side



LOC30
\$50/wk
\$80/mo

Wheelchair, Transport

17- or 19-inch. Cushion not included.



LOC29
\$50/wk
\$80/mo

Elevating Legrest

Left or right side



LOC73
\$15/wk
\$15/mo

CPM Machine, Optiflex-K1 - Knee

Requires sheepskin pad set purchased separately: \$59.95



LOC63
\$425/wk
\$425/mo

Cryo Cuff Cooler

Requires cuff purchased separately: starting at \$136.95



LOC53
\$15/wk
\$25/mo

Rental Terms

- A valid credit card is required for rental.
- Fees for delivery and pick-up (if requested) are due at the time of rental.
- Pick-up fee will be credited if rental is returned to store.
- Equipment is sanitized and supplied in in good working order.
- Rental equipment models may differ from pictures shown.
- We reserve the right to apply a cleaning surcharge for equipment returned in visibly soiled condition.
- Lost or damaged equipment will be charged at replacement price.

Delivery, Pick-Up and Other Fees

Small Items, Manual Wheelchairs
Large Items (Beds, Lift Chairs, Scooters, Power Wheelchairs)
Oversized Items requiring >2 personnel to move
Surcharge for equipment returned in visibly soiled condition
Additional labour if client owned furniture must be moved
(signed damage waiver required)

	Local <20km	GTA 20-50km
	\$25 each way	\$50 each way
	\$50 each way	\$85 each way
	\$100 each way	\$150 each way
		\$25 minimum
	\$34.50/each half hour or part thereof	